

CANADA'S LONGEST  
RUNNING ANGUS SALE  
*77th Edition*

# *Bluewater* ANGUS SALE

FEATURING THE LOCHLEA ANGUS DISPERSAL



**LOT 1: NEILCAIRN HEADLINER 052F**

**SATURDAY, OCTOBER 19, 2024 1:00 PM**  
**CARGILL AUCTION MART, CARGILL, ON**



# *Congratulations & Thank You!*

BLUEWATER HIGH SELLING LOTS IN 2023



*\$26,000*

**GLEN ISLAY PRIDE 2E**

Purchased by Bronyx Angus of Unity, SK.

A daughter sells at Lot 27



*\$12,500*

**LUCKHARDT HEADLINER 9K**

Purchased by Grist Farm of Orton, ON  
& Weber Family Angus of Listowel, ON.

Many from the Headliner family selling.

A special thank you to Calvin Martin and Martin Construction for donating the beef for the meal during the sale.  
Each year, donations received from the meal go towards 4H and Junior Angus initiatives throughout the year.



#### SALE STAFF:

|                                   |                |
|-----------------------------------|----------------|
| Glenn Sinclair, Auctioneer        | (519) 372-8614 |
| Cam Hill, Sales Committee         | (519) 373-6993 |
| Jim Luckhardt, Sales Committee    | (519) 372-6304 |
| Katherine Giffen, Sales Committee | (705) 718-1877 |
| Ian Weber, Sales Committee        | (519) 710-3300 |
| DJ Smith, Sales Consultant        | (519) 323-8016 |
| Lars Deleeuw, Ringman             | (519) 717-0680 |

#### ONLINE BIDDING:



#### CATALOGUE DESIGN:

Unique Designs      krae.unique@gmail.com

#### SALE LOCATION:

40 Cargill Rd. From Intersection of Hwy 9 & Bruce Rd. 3,  
10km North & West on Cargill Rd.

#### FOOD & REFRESHMENTS:

*Food & refreshments will be available sale day.  
Beef on a bun donated by Calvin Martin.  
Donations in support of Junior Angus members is encouraged.*

#### ACCOMODATIONS:

*Best Western Plus, Walkerton East Ridge Hotel  
10 East Ridge Road, RR 2, Walkerton, ON  
Tel: 1-855-436-3030  
Travelers Inn, 244 7th Ave., Hanover, ON  
Tel: 1-800-801-8398*

#### TERMS & CONDITIONS:

Cattle will sell under the standard terms & conditions as recommended by the Canadian Angus Association. All cattle are to be paid for sale day unless prior arrangements have been made.

#### ANNOUNCEMENTS:

All announcements made from the auction block take precedent over the printed material in the catalogue.

#### LIABILITIES:

Although every precaution has been taken to protect the safety and comfort of the buyers, the sellers and sale staff assume no responsibility in this matter and disclaim any liability, legal or otherwise, in the event of an accident or loss of property.

#### LOADING OUT:

No cattle load out until after the conclusion of the sale.

#### JUNIOR INCENTIVE:

Bluewater Angus Club is committed to our Junior Members. As an incentive, any junior member purchasing a calf for their 2025 4-H project and shows them as a bred heifer and completes their 4-H achievement, will receive a \$250 refund, upon request to the board. The same will apply if the member purchases a bred heifer and they show the calf as their 2025 project and completes their 4-H achievement. Purchase must be transferred into the junior's name.

#### DELIVERY:

Consignors will assist in organizing trucking.

---

Welcome to the 77th Bluewater Angus sale featuring the complete Lochlea Dispersal of Janice and Brian Copeland.

It is a real pleasure to present these cattle for your valuation. The dispersal cattle represent some of the most cutting edge genetics available anywhere in north america incorporating some of the most important genetic giants that are almost impossible to find anywhere today. Even more important is the fact that I am sure the cattle are as honest and hard working as the people they represent. It has been a real pleasure to work with the Copelands and wish them well in their future endeavors.

The Bluewater part of the sale is a collection of genetics and consignors that have been supporting this sale from their first time to others with 50 years of consigning. We thank all consignors for supporting our club and therefore supporting our juniors. We also want to thank the organizations who have made donations to support our juniors. We could not continue without you. Also please support our Wes for Youth donation heifer from Hillbrooke Angus. 100% of the funds raised goes to support Youth mental health.

It is a great time to be in the cattle business with unprecedented prices now here and quite likely for a while. Now is the time to sent some old cows to town and replace them with fresh genetics.

If you have any questions about the cattle contact any member of the sale committe or sale staff and we will get you the answer to your question.

*Your Bluewater Board of Directors*



# *Welcome to the Lochlea Angus Complete Dispersal!*

## **"Angus beef are in the Copeland blood"**

That was the heading of a full page article published in The Ontario Farmer on May 18, 2021. Following in the footsteps of Brian's father, Tom Copeland, who started his Angus herd in 1940, as well as his brother Glenn and his son Tom, we began putting together our black angus breeding herd in 2017.

We quickly grew from a wee herd of just 5 cows to more than 50 at times, keeping the best for what you see today in this dispersal sale. This has been a joyful and rewarding experience for us. These cattle have been good to us and we are confident that they will be as good to you.

It is now time to retire to a quieter lifestyle, but first we have some messages to pass on. We must thank a good friend and valuable assistant, Steve Colquhoun, for his contributions to our endeavours. Special thanks also to our daughter, Laurie Copeland, who has been invaluable in helping us navigate the mountains of data required by the Angus Association. We indeed wish to thank Ian Weber and Jim Luckhardt for their guidance in preparing for today and the girls at the Canadian Angus Association.

Best Wishes to all of the friends we have made over the years in this industry and to all attendees here today for your support.

With sincere appreciation,

*Brian & Janice Copeland*

LOCHLEA ANGUS







## NEILCAIRN HEADLINER 052F

CRHD 052F | December 09, 2018 | 2078908



| CE   | BW   | WW  | YW   | MCE   | MILK |
|------|------|-----|------|-------|------|
| +8.0 | +0.0 | +58 | +103 | +10.0 | +29  |

It wasn't an easy task deciding who to lead-off our dispersal with, but 052F is certainly worth the honor. This BISMARCK dam stems from the most prolific cow family in our program. Her dam, 052Z, was given to us by my late brother Glenn as an anniversary gift and she is one of those gifts that keeps on giving through her daughters and grand daughters. She was designated a Premier dam by the CAA in 2019 and you will find relatives having an impact in multiple programs across the country. 052F is quiet and problem-free cow who is a treat to work with. Her Density daughter sells as Lot 2 and we love her so much that we bred 052F back again for 2025 the same way to DENSITY.

Confirmed safe to a May 25th breeding by S A V 004 DENSITY 4336.

**CONSIGNED BY LOCHLEA ANGUS.**

G A R GRID MAKER

**S A V BISMARCK 5682**

S A V ABIGALE 0451

SITZ UPWARD 307R

**NEILCAIRN MISS HEADLINER 52Z**

LUCKHARDT PRE HEADLINER 5T

G D A R TRAVELER 044

G A R PRECISION 2536

SCHOENES FIX IT 826

S A V ABIGALE 6062

CONNEALY ONWARD

SITZ HENRIETTA PRIDE 81M

G A R PREDESTINED

LUCKHOLM LEAD ON HEADLINER 14P



## LOCHLEA HEADLINER LBJ3L

LBJ 3L | February 12, 2023 | 2317709



| CE   | BW   | WW  | YW  | MCE  | MILK |
|------|------|-----|-----|------|------|
| +8.0 | +1.2 | +53 | +99 | +5.0 | +28  |

This fancy heifer checks all the boxes. DENSITY on top of the pedigree and SAV BISMARCK on the bottom. You tell me where you can get a better cow-making line-up. Check her mother, also selling in this sale as Lot 1.

Pasture exposed from June 21st until sale day to LOCHLEA ICONIC 8L

**CONSIGNED BY LOCHLEA ANGUS.**

S A V 8180 TRAVELER 004

**S A V 004 DENSITY 4336**

S A V MAY 7238

S A V BISMARCK 5682

**NEILCAIRN HEADLINER 052F**

NEILCAIRN MISS HEADLINER 52Z

SITZ TRAVELER 8180

BOYD FOREVER LADY 8003

LEACHMAN RIGHT TIME

S A R PROSPECTOR MAY 9124

G A R GRID MAKER

S A V ABIGALE 0451

SITZ UPWARD 307R

LUCKHARDT PRE HEADLINER 5T





### LOCHLEA HEADLINE GLENNA 9K

LBJ 9K | March 08, 2022 | 2267755



S A V 004 DENSITY 4336

#### LOCHLEA GLENN LEGACY

NEILCAIRN MISS HEADLINER 52Z

S A V 004 DENSITY 4336

#### NEILCAIRN MISS HEADLINER 252F

NEILCAIRN MISS HEADLINER 52Z

S A V 8180 TRAVELER 004  
S A V MAY 7238

SITZ UPWARD 307R  
LUCKHARDT PRE HEADLINER 5T  
S A V 8180 TRAVELER 004  
S A V MAY 7238

SITZ UPWARD 307R  
LUCKHARDT PRE HEADLINER 5T

| CE   | BW   | WW  | YW   | MCE  | MILK |
|------|------|-----|------|------|------|
| +9.0 | +1.2 | +66 | +104 | +2.0 | +33  |

It is no mistake that we see the HEADLINER name on all these young first calf cows, but by choice. The breeding on the bottom goes back to some fantastic cows - many in the show ring and some just truly good producing cows. She gave birth to a nice heifer calf April 29, 24 by JINDRA ACCLAIM in the sale as Lot 3A.

Pasture exposed from July 27th until sale day to LOCHLEA PRESIDENT LBJ1L

CONSIGNED BY LOCHLEA ANGUS.



### LOCHLEA HEADLINE GLENNA 8M

LBJ 8M | April 29, 2024 | 2367679



JINDRA 3RD DIMENSION

#### JINDRA ACCLAIM

JINDRA BLACKBIRD LASSY 1111

LOCHLEA GLENN LEGACY

#### LOCHLEA HEADLINER GLENNA 9K

NEILCAIRN MISS HEADLINER 252F

JINDRA DOUBLE VISION  
JINDRAS SAPPHIRE J 417

CONNEALY IMPRESSION  
JINDRAS ENCHANTRESS J 102  
S A V 004 DENSITY 4336  
NEILCAIRN MISS HEADLINER 52Z

S A V 004 DENSITY 4336  
NEILCAIRN MISS HEADLINER 52Z

| CE   | BW   | WW  | YW   | MCE  | MILK |
|------|------|-----|------|------|------|
| +5.0 | +2.7 | +75 | +125 | +0.0 | +36  |

A standout ACCLAIM heifer calf from this years' crop. She exhibits a tremendous amount of growth for a young calf and much of this is due to her hardworking dam. Look for her to follow in her mother's footsteps and become a very productive cow.

CONSIGNED BY LOCHLEA ANGUS.



### JAYGLENCO MISS HEADLINER 7E

GJC 7E | March 01, 2017 | 1968306



S A V BRILLIANCE 8077

#### PFLC BRILLIANCE 5B

LOCUST GROVE BLACKBIRD 5T

EXAR UPSHOT 0562B

#### LUCKHARDT HEADLINER 6C

LUCKHARDT HEADLINER 12Z

S A V BISMARCK 5682  
S A V BLACKCAP MAY 5270

RITO 9FB3 OF 5H11 FULLBACK  
LOCUST GROVE CT BLACKBIRD 2F  
SITZ UPWARD 307R  
EXAR BARBARA T020

CONNEALY MENTOR 7374  
LUCKHARDT HEADLINER 13X

| CE   | BW   | WW  | YW  | MCE  | MILK |
|------|------|-----|-----|------|------|
| +3.0 | +2.2 | +38 | +74 | +4.0 | +25  |

7E is a moderate framed cow with bigtime MATERNAL power. She puts everything she has into raising her calf and she always brings home a big one. Last year's bull calf by EXT was the biggest and best steer calf we sold. The weaning weight on her calves stems from her dam, HEADLINER 6C, who was a tremendous producer for us. 7E will serve you well! Daughters sell as Lots 5 and 7. Grand Daughters also sell as Lots 5A and 6, and she is the dam of our walking herd sire LBJ 1L.

Pasture exposed from May 16th until sale day to LOCHLEA ICONIC 8L

CONSIGNED BY LOCHLEA ANGUS.





## LOCHLEA SHINING STAR

LBJ 77H | March 02, 2020 | 2144350



COLEMAN CHARLO 0256

O C C PAXTON 730P  
BOHI ABIGALE 6014

### S A V PRESIDENT 6847

S A V BLACKCAP MAY 4136

PFLC BRILLIANCE 5B

### JAYGLENCO MISS HEADLINER 7E

LUCKHARDT HEADLINER 6C

S A V 8180 TRAVELER 004  
S A V MAY 239

S A V BRILLIANCE 8077  
LOCUST GROVE BLACKBIRD 5T

EXAR UPSHOT 0562B

LUCKHARDT HEADLINER 12Z

| CE   | BW   | WW  | YW  | MCE  | MILK |
|------|------|-----|-----|------|------|
| +1.0 | +2.9 | +52 | +90 | -1.0 | +30  |

SHINING STAR is a shining example of what you can do when you have this HEADLINER family on the bottom side of any pedigree. With PRESIDENT on the top side, only good things will happen. Much like her dam (selling as Lot 4), she is a tremendous producer who does one heck of a job raising her calves. Her daughter by DENSITY sells along side her as Lot 5A and her 2023 born bred heifer by STUNNER sells as Lot 6. She is bred back this year to MUSGRAVE STUNNER and is due to calve in March.

Confirmed safe to a June 21 breeding by MUSGRAVE 316 STUNNER

CONSIGNED BY LOCHLEA ANGUS.



## LOCHLEA SHINING STAR 4M

LBJ 4M | April 24, 2024 | 2367673



S A V 8180 TRAVELER 004

SITZ TRAVELER 8180  
BOYD FOREVER LADY 8003

### S A V 004 DENSITY 4336

S A V MAY 7238

S A V PRESIDENT 6847

LEACHMAN RIGHT TIME  
S A R PROSPECTOR MAY 9124

COLEMAN CHARLO 0256  
S A V BLACKCAP MAY 4136

### LOCHLEA SHINING STAR

JAYGLENCO MISS HEADLINER 7E

PFLC BRILLIANCE 5B  
LUCKHARDT HEADLINER 6C

| CE   | BW   | WW  | YW  | MCE  | MILK |
|------|------|-----|-----|------|------|
| +4.0 | +2.9 | +56 | +82 | -3.0 | +28  |

4M is without question the most appealing of our heifer calves. She's attractive in her makeup with a strong top and bold in her presence. We all know how the DENSITY females turn out as cows and can only imagine what 4M will be like. Her dam sells as Lot 5.

CONSIGNED BY LOCHLEA ANGUS.



## LOCHLEA STAR LBJ9L

LBJ 9L | March 27, 2023 | 2317703



LD CAPITALIST 316

CONNEALY CAPITALIST 028  
LD DIXIE ERICA 2053

### MUSGRAVE 316 STUNNER

MCATL BLACKBIRD 831-1378

S A V PRESIDENT 6847

MCATL PURE PRODUCT 903-55  
MCATL BLACKBIRD 1378-573

COLEMAN CHARLO 0256  
S A V BLACKCAP MAY 4136

### LOCHLEA SHINING STAR

JAYGLENCO MISS HEADLINER 7E

PFLC BRILLIANCE 5B  
LUCKHARDT HEADLINER 6C

| CE   | BW   | WW  | YW   | MCE  | MILK |
|------|------|-----|------|------|------|
| -3.0 | +3.9 | +66 | +107 | +0.0 | +28  |

9L is sired by STUNNER and she is a STUNNER! Her nice profile and bold design has made her a favourite among visitors this past year. We used STUNNER a lot, and he never failed to impress us. Her PRESIDENT dam (Lot 5) and BRILLIANCE grand dam (Lot 4) are among the hardest working cows in our herd. She is bred with sexed SITZ STELLAR for an early calf that is sure to impress.

Confirmed safe to a March 20th breeding by SITZ STELLAR 726D (Female Sorted)

CONSIGNED BY LOCHLEA ANGUS.





## 7 LOCHLEA JAY HEADLINER 5K

LBJ 5K | January 19, 2022 | 2302037



| CE   | BW   | WW  | YW   | MCE  | MILK |
|------|------|-----|------|------|------|
| +2.0 | +2.8 | +68 | +120 | +3.0 | +25  |

5K is another hard working daughter of 7E (Lot 4) by ICONIC. She's very feminine and attractive in her design with a near perfect udder. 5K is raising one of our heaviest bull calves this year calf, which will be sold in our stocker sale this Fall. It's a shame that most folks won't see these bull calves at the side of these cows, because they are some of the most impressive calves we've ever raised. She bred back A.I and is due in March to SITZ UPWARD 307R.

Confirmed safe to a June 21st breeding by SITZ UPWARD 307R

**CONSIGNED BY LOCHLEA ANGUS.**

MUSGRAVE 316 STUNNER

**DB ICONIC G95**

DB MS DISCOVERY D13

PFLC BRILLIANCE 5B

**JAYGLENCO MISS HEADLINER 7E**

LUCKHARDT HEADLINER 6C

LD CAPITALIST 316

MCATL BLACKBIRD 831-1378

V A R DISCOVERY 2240

DB MS FINAL TOOL 4120

S A V BRILLIANCE 8077

LOCUST GROVE BLACKBIRD 5T

EXAR UPSHOT 0562B

LUCKHARDT HEADLINER 12Z



## 8 LOCHLEA CLASSIE LASSIE

LBJ 7H | February 23, 2020 | 2144600



| CE   | BW   | WW  | YW   | MCE  | MILK |
|------|------|-----|------|------|------|
| +7.0 | +1.9 | +69 | +129 | +2.0 | +24  |

7H is perhaps the strongest phenotype cow in the offering. She is very much what we've come to expect from the HEADLINER family. She is one of 4 daughters that HEADLINER 6C produced before she left us and they're all fantastic in their own right. She had a bull calf this year, but her 2023 heifer sells at Lot 9 and she is bred up early to Genex sire DB ICONIC G95.

Confirmed safe to a June 21st breeding by DB ICONIC G95

**CONSIGNED BY LOCHLEA ANGUS.**

COLEMAN CHARLO 0256

**S A V PRESIDENT 6847**

S A V BLACKCAP MAY 4136

EXAR UPSHOT 0562B

**LUCKHARDT HEADLINER 6C**

LUCKHARDT HEADLINER 12Z

O C C PAXTON 730P

BOHI ABIGALE 6014

S A V 8180 TRAVELER 004

S A V MAY 2397

SITZ UPWARD 307R

EXAR BARBARA T020

CONNEALY MENTOR 7374

LUCKHARDT HEADLINER 13X





## LOCHLEA LASSIE LBJ12L

LBJ 12L | April 29, 2023 | 2334280



S A V FINAL ANSWER 0035

SITZ TRAVELER 8180  
S A V EMULOUS 8145

### S A V PIONEER 7301

S A V BLACKBIRD 5297

BOYD NEW DAY 8005  
S A V BLACKBIRD 1082  
COLEMAN CHARLO 0256  
S A V BLACKCAP MAY 4136

S A V PRESIDENT 6847

### LOCHLEA CLASSIE LASSIE

LUCKHARDT HEADLINER 6C

EXAR UPSHOT 0562B  
LUCKHARDT HEADLINER 12Z

| CE   | BW   | WW  | YW   | MCE  | MILK |
|------|------|-----|------|------|------|
| +2.0 | +3.9 | +75 | +139 | +5.0 | +19  |

A PIONEER daughter out of an exceptional PRESIDENT dam (Lot 8) going back to the 6C cow. She could very well be the sleeper of the sale offering. Pasture exposed from June 21st until sale day to LOCHLEA ICONIC 8L

CONSIGNED BY LOCHLEA ANGUS.



## LOCHLEA TRUE HEADLINER 6K

LBJ 6K | February 02, 2022 | 2263384



S A V 004 DENSITY 4336

S A V 8180 TRAVELER 004  
S A V MAY 7238

### LOCHLEA GLENN LEGACY

NEILCAIRN MISS HEADLINER 52Z

SITZ UPWARD 307R  
LUCKHARDT PRE HEADLINER 5T  
SITZ UPWARD 307R  
EXAR BARBARA T020

EXAR UPSHOT 0562B

### LUCKHARDT HEADLINER 6C

LUCKHARDT HEADLINER 12Z

CONNEALY MENTOR 7374  
LUCKHARDT HEADLINER 13X

| CE   | BW   | WW  | YW   | MCE  | MILK |
|------|------|-----|------|------|------|
| +8.0 | +1.2 | +62 | +110 | +6.0 | +32  |

A 2 year old HEADLINER cow is a daughter of LEGACY, our herd bull, with breeding back to DENSITY and UPSHOT. She gave us a nice heifer calf, which will be sold privately. The fact she is not an AI cow shouldn't deter you. Look at the power on the dam's side of this pedigree. Bred back to Genex sire DB ICONIC G95.

Confirmed safe to a April 21st breeding by DB ICONIC G95

CONSIGNED BY LOCHLEA ANGUS.



## LOCHLEA HEADLINER LBJ2L

LBJ 2L | February 09, 2023 | 2317698



LD CAPITALIST 316

CONNEALY CAPITALIST 028  
LD DIXIE ERICA 2053

### MUSGRAVE 316 STUNNER

MCATL BLACKBIRD 831-1378

MCATL PURE PRODUCT 903-55  
MCATL BLACKBIRD 1378-573  
SITZ UPWARD 307R  
EXAR BARBARA T020

EXAR UPSHOT 0562B

### LUCKHARDT HEADLINER 6C

LUCKHARDT HEADLINER 12Z

CONNEALY MENTOR 7374  
LUCKHARDT HEADLINER 13X

| CE   | BW   | WW  | YW   | MCE  | MILK |
|------|------|-----|------|------|------|
| +5.0 | +1.5 | +62 | +113 | +3.0 | +32  |

This solid bodied heifer by MUSGRAVE 316 STUNNER has been a pet around the barn, quiet and smart. Her mother, LUCKHARDT HEADLINER 6C was a terrific cow, going back to her EXAR UPSHOT sire. I was told when we acquired her that she wasn't going to be our largest cow, but she would definitely be our best cow. And she has been. Notice the ownership of this heifer. Steve Calquhoun helps to handle the cows and in return gets pick of the heifer crop. And what a pick he made. Pasture exposed from June 21st until sale day to LOCHLEA ICONIC 8L

CONSIGNED BY LOCHLEA ANGUS.





## MBA PEG 614

MBA 614D | January 23, 2016 | 2302041



| CE    | BW   | WW  | YW  | MCE   | MILK |
|-------|------|-----|-----|-------|------|
| +11.0 | -0.1 | +40 | +77 | +12.0 | +20  |

We acquired PEG as a bred heifer in 2017 from the famed Meadow Bridge herd through Bluewater Sale, so it's somewhat fitting that she makes a repeat appearance here in our dispersal. We believe her to be about as close to the ideal Angus female that we have owned. She's quiet natured, moderate framed cow that produces top calves every year. She is a very fertile cow boasting a calving interval of 346 days of 7 calves and she's been bred A.I each and every year. 614D transmits attractiveness into each and every one of her calves as evident in her daughters also selling as Lot 13 & 14. A barn full of this type of cow would be like winning a lottery. Take her home. Confirmed safe to a May 25th breeding by S A V 004 DENSITY 4336

**CONSIGNED BY LOCHLEA ANGUS.**

S A V FINAL ANSWER 0035

SITZ TRAVELER 8180  
S A V EMULOUS 8145

**PFLC FINAL ANSWER 4X**

LEGEND LANE BARDETTA 824U

LEGEND LANE REVOLUTION 505  
PRIME TIME'S 31H BARDETTA 549  
CONNEALY PRODUCT 568  
EBONISTA OF CONANGA 471

CONNEALY FINAL PRODUCT

**PFLC PEG 155B**

PFLC PEG 55Y

SITZ UPWARD 307R  
EARLEY PEG 3M



## LOCHLEA PEG LBJ4L

LBJ 4L | February 12, 2023 | 2317699



| CE   | BW  | WW  | YW   | MCE  | MILK |
|------|-----|-----|------|------|------|
| +7.0 | 0.0 | +58 | +101 | +7.0 | +26  |

A quiet and fancy heifer sired by STUNNER. Stunner is now deceased and hard to acquire semen. Her mother is a farm favourite since being purchased from Meadow Bridge Angus and has served us well. Pasture exposed to herd bull LBJ 8L, a son of ICONIC out of an SAV RENOWN cow that cows back to a dam from Connealy Angus.

Pasture exposed from June 21st until sale day to LOCHLEA ICONIC 8L

**CONSIGNED BY LOCHLEA ANGUS.**

LD CAPITALIST 316

CONNEALY CAPITALIST 028  
LD DIXIE ERICA 2053

**MUSGRAVE 316 STUNNER**

MCATL BLACKBIRD 831-1378

MCATL PURE PRODUCT 903-55  
MCATL BLACKBIRD 1378-573  
S A V FINAL ANSWER 0035  
LEGEND LANE BARDETTA 824U

PFLC FINAL ANSWER 4X

**MBA PEG 614**

PFLC PEG 155B

CONNEALY FINAL PRODUCT  
PFLC PEG 55Y





## 14 LOCHLEA PEGGY

LBJ 19H | February 25, 2020 | 2144602



| CE    | BW   | WW  | YW  | MCE   | MILK |
|-------|------|-----|-----|-------|------|
| +14.0 | -0.4 | +47 | +96 | +11.0 | +26  |

Peggy is a cow we raised out of a Meadow Bridge cow that we purchased. This cow is one of the 3 or 4 that Jim and Ian fell in love with on viewing the herd. A daughter of RAINDANCE and the only one in the sale that has all the markings of being a long producing cow. Peggy gave birth to a bull calf on May 17th. She is young and is built like an Angus cow should be, big ribbed with a nice udder. Pasture exposed from July 27th until sale day to LOCHLEA PRESIDENT LBJ1L

**CONSIGNED BY LOCHLEA ANGUS.**

COLEMAN CHARLO 0256

O C C PAXTON 730P  
BOHI ABIGALE 6014

**S A V RAINDANCE 6848**

S A V BLACKCAP MAY 4136

S A V 8180 TRAVELER 004  
S A V MAY 2397

PFLC FINAL ANSWER 4X

S A V FINAL ANSWER 0035  
LEGEND LANE BARDETTA 824U

**MBA PEG 614**

PFLC PEG 155B

CONNEALY FINAL PRODUCT  
PFLC PEG 55Y



## 15 PFLC PURE PRIDE 070E

PFLC 070E | January 03, 2017 | 2014556



| CE   | BW   | WW  | YW  | MCE  | MILK |
|------|------|-----|-----|------|------|
| +2.0 | +3.8 | +59 | +98 | +6.0 | +19  |

PURE PRIDE is one of the older cows in our herd, but is no less productive. She gave us a heifer calf from our herd bull LBJ 16K. With both DENSITY and RENOWN in his pedigree, 16K gave us a lot of heifer calves. They looked great. She is bred this year to RITO 9969 with the hope of another heifer calf. With SILVEIRAS STYLE bloodline, this could be a show prospect.

Confirmed safe to a July 12th breeding by S A V 707 RITO 9969

**CONSIGNED BY LOCHLEA ANGUS.**



## 15a LOCHLEA PRIDE 12M

LBJ 12M | May 20, 2024 | 2367682



**SIRE: LOCHLEA JUDGE 13J**

GAMBLES HOT ROD

**SILVEIRAS STYLE 9303**

SILVEIRAS ELBA 2520

S A V NET WORTH 4200

**TROWBRIDGE PURE PRIDE 070**

LIMESTONE PURE PRIDE T152

FAMOUS 7001  
CHAMPION HILL LADY 703

TWIN VALLEY PRECISION E161  
D A R ELBA 55

S A V 8180 TRAVELER 004  
S A V MAY 2410

B C LOOKOUT 7024  
CAF PURE PRIDE EXT 99





## 16 LOCHLEA LITTLE DELIA

LBJ 13H | February 06, 2020 | 2144601



BASIN PAYWEIGHT 006S

### BASIN PAYWEIGHT 1682

21AR O LASS 7017

R B TOUR OF DUTY 177

### HENRIA DELIA 13E

BRANTNOR'S DELIA 10B

VERMILION PAYWEIGHT J847  
BASIN LUCY 3829

HARB PENDLETON 765 J H  
21AR O LASS F24A  
WERNER WAR PARTY 2417  
B A LADY 6807 305

DAJS SHOCKWAVE 612  
BRANTNOR'S DELIA 1Y

| CE  | BW   | WW  | YW   | MCE  | MILK |
|-----|------|-----|------|------|------|
| 0.0 | +3.3 | +83 | +140 | +5.0 | +22  |

A BASIN PAYWEIGHT 1682 out of one of our foundation cows. When the team was at the farm looking at the cows, 3 stood out. This heavy set cow was one of them. At Lochlea, we tried to retain cows like this one in our herd. A good cow can just look at you and you can see that she knows that she is a keeper.

Pasture exposed from July 27th until sale day to LOCHLEA PRESIDENT LBJ1L

CONSIGNED BY LOCHLEA ANGUS.



## 17 LOCHLEA DELIA LBJ 13L

LBJ 13L | May 02, 2023 | 2333996



S A V FINAL ANSWER 0035

### S A V PIONEER 7301

S A V BLACKBIRD 5297

BASIN PAYWEIGHT 1682

### LOCHLEA LITTLE DELIA

HENRIA DELIA 13E

SITZ TRAVELER 8180  
S A V EMULOUS 8145

BOYD NEW DAY 8005  
S A V BLACKBIRD 1082  
BASIN PAYWEIGHT 006S  
21AR O LASS 7017

R B TOUR OF DUTY 177  
BRANTNOR'S DELIA 10B

| CE   | BW   | WW  | YW   | MCE  | MILK |
|------|------|-----|------|------|------|
| +1.0 | +2.5 | +86 | +153 | +8.0 | +26  |

Another PIONEER daughter, this time out of a BASIN PAYWEIGHT 1682 cow. When we acquired PIONEER semen, my thoughts were that if he was a good bull in the past, why not now. Look and see for yourself. Her mother sells in this sale too.

Pasture exposed from June 21st to sale day to LOCHLEA ICONIC 8L

CONSIGNED BY LOCHLEA ANGUS.



## 18 LOCHLEA DELIA LBJ5L

LBJ 5L | February 17, 2023 | 2317701



S A V 8180 TRAVELER 004

### S A V 004 DENSITY 4336

S A V MAY 7238

R B TOUR OF DUTY 177

### HENRIA DELIA 13E

BRANTNOR'S DELIA 10B

SITZ TRAVELER 8180  
BOYD FOREVER LADY 8003

LEACHMAN RIGHT TIME  
S A R PROSPECTOR MAY 9124  
WERNER WAR PARTY 2417  
B A LADY 6807 305

DAJS SHOCKWAVE 612  
BRANTNOR'S DELIA 1Y

| CE    | BW   | WW  | YW  | MCE  | MILK |
|-------|------|-----|-----|------|------|
| +10.0 | +1.7 | +45 | +74 | +5.0 | +22  |

This daughter of SAV DENSITY, one of the breeds most successful sires, combined with a RB TOUR OF DUTY cow, is sure to produce a super calf. Years back when we started out, this HENRIA DELIA cow was the most expensive cow we bought. Checked safe in calf with female sexed semen of SITZ STELLAR for an early calf.

Confirmed safe to a March 20th breeding by SITZ STELLAR 726D (Female Sorted)

CONSIGNED BY LOCHLEA ANGUS.





## 19 LOCHLEA LADY LASS 608J

LBJ 608J | April 20, 2021 | 2199074



CONNEALY ONWARD

CONNEALY LEAD ON  
ALTUNE OF CONANGA 6104

### SITZ UPWARD 307R

SITZ HENRIETTA PRIDE 81M

SITZ VALUE 7097  
SITZ HENRIETTA PRIDE 1370  
SITZ TRAVELER 8180  
S A V EMULOUS 8145

S A V FINAL ANSWER 0035

### MBA BLACK LASS 608

JL BLACKLASS 4099

S A V BRILLIANCE 8077  
JL BLACKLASS 9267

| CE   | BW   | WW  | YW   | MCE   | MILK |
|------|------|-----|------|-------|------|
| +7.0 | +1.4 | +66 | +119 | +10.0 | +30  |

At Lochlea, we used a lot of SITZ UPWARD on our cows, but this was the only one we retained. SITZ UPWARD is an infamous name in the Angus breed, but the dam, by FINAL ANSWER, is why we kept this cow. She has an excellent udder and is a great mom. She calved on June 15, 24 and was turned out with LBJ 1L on July 27th.

Pasture exposed from July 27th until sale day to LOCHLEA ICONIC 8L

CONSIGNED BY LOCHLEA ANGUS.



## 20 LOCHLEA LADY LASS LBJ11L

LBJ 11L | April 13, 2023 | 2317702



S A V PRESIDENT 6847

COLEMAN CHARLO 0256  
S A V BLACKCAP MAY 4136

### LOCHLEA JUDGE 13J

HENRIA DELIA 13E

R B TOUR OF DUTY 177  
BRANTNOR'S DELIA 10B  
CONNEALY ONWARD  
SITZ HENRIETTA PRIDE 81M

SITZ UPWARD 307R

### LOCHLEA LADY LASS 608J

MBA BLACK LASS 608

S A V FINAL ANSWER 0035  
JL BLACKLASS 4099

| CE   | BW   | WW  | YW   | MCE  | MILK |
|------|------|-----|------|------|------|
| +4.0 | +2.6 | +67 | +124 | +7.0 | +28  |

This is the daughter of a herd bull who was the son of PRESIDENT out of the DELIA cow that we first started with. The fact that this bull's mother is by SITZ UPWARD also helps. Using these herd bulls can put as much profit in your pockets as AI bulls. That is a fact. A.I bred to female sorted SITZ STELLAR for an early calf.

Confirmed safe to a March 20th breeding by SITZ STELLAR 726D (Female Sorted)

CONSIGNED BY LOCHLEA ANGUS.



## 21 LOCHLEA CLASSIC BLACKCAP

LBJ 50F | January 16, 2018 | 2018782



SITZ WISDOM 481T

CONNEALY ONWARD  
SITZ ELLUNA ELITE 94P

### KG SMART ONE 9116

KG RITO LADY 7988

KG OUT FRONT 2217  
KG RITO LADY 4027  
SITZ WISDOM 481T  
KG RITO LADY 7988

KG SMART ONE 9116

### LEELA BLACKCAP 9B

LEELA BLACKCAP 16U

W C C PRECISION E161 J239  
LEELA BLACKCAP 11R

| CE   | BW   | WW  | YW   | MCE  | MILK |
|------|------|-----|------|------|------|
| +2.0 | +2.8 | +72 | +121 | +5.0 | +23  |

This was the very first calf born for us at Lochlea. Our first Dolly cow. A special cow, her offspring, all nicknamed Dolly in her honour, have always come to be farm favourites. She is deep bodied, easy going, personable and enjoyable to be around. She bears the traits of ease of calving, resulting in solid offspring with quiet natures and easy handling. She has a daughter in this sale, LBJ 50H.

Pasture exposed from July 27th until sale day to LOCHLEA PRESIDENT LBJ1L

CONSIGNED BY LOCHLEA ANGUS.





## 22 LOCHLEA DOLLY

LBJ 50H | March 09, 2020 | 2144603



SYDGEN EXCEED 3223

### SYDGEN ENHANCE

SYDGEN RITA 2618

KG SMART ONE 9116

### LOCHLEA CLASSIC BLACKCAP

LEELA BLACKCAP 9B

SYDGEN GOOGOL

SYDGEN FOREVER LADY 1255

SYDGEN LIBERTY GA 8627

FOX RUN RITA 9308

SITZ WISDOM 481T

KG RITO LADY 7988

KG SMART ONE 9116

LEELA BLACKCAP 16U

| CE   | BW   | WW  | YW   | MCE  | MILK |
|------|------|-----|------|------|------|
| +6.0 | +2.1 | +72 | +130 | +8.0 | +31  |

Another Dolly, again a farm favourite. She bears the traits of ease of calving, resulting in solid offspring with quiet natures and easy handling. This is an honest producing cow and at only 4 years, is ready to become your farm favourite. She gave birth to a bull calf on May 26th.

Pasture exposed from July 27th until sale day to LOCHLEA PRESIDENT LBJ1L

CONSIGNED BY LOCHLEA ANGUS.



## 23 LOCHLEA DOLLY LBJ7L

LBJ 7L | March 20, 2023 | 2317704



JINDRA 3RD DIMENSION

### JINDRA ACCLAIM

JINDRA BLACKBIRD LASSY 1111

SYDGEN ENHANCE

### LOCHLEA DOLLY

LOCHLEA CLASSIC BLACKCAP

JINDRA DOUBLE VISION

JINDRAS SAPPHIRE J 417

CONNEALY IMPRESSION

JINDRAS ENCHANTRESS J 102

SYDGEN EXCEED 3223

SYDGEN RITA 2618

KG SMART ONE 9116

LEELA BLACKCAP 9B

| CE   | BW   | WW  | YW   | MCE   | MILK |
|------|------|-----|------|-------|------|
| +8.0 | +1.1 | +82 | +155 | +10.0 | +33  |

You will see the Dolly name show up throughout these cows. That is the name we gave the first heifer born on our farm. This one deserves that name. A daughter of JINDRA ACCLAIM, she carries great size and is deep ribbed. Her mother also sells in this sale and is proof of where she gets her size. Bred to SITZ STELLAR with sexed female semen for an early calf.

Confirmed safe to a March 20th breeding by SITZ STELLAR 726D (Female Sorted)

CONSIGNED BY LOCHLEA ANGUS.



## 24 TAMBRI BLACKBERRY 10E

TMJ 10E | January 12, 2017 | 1988369



WERNER WAR PARTY 2417

### R B TOUR OF DUTY 177

B A LADY 6807 305

B C LOOKOUT 7024

### TAMBRI BLACKBERRY 3W

TAMBRI BLACKBERRY 9M

CONNEALY ONWARD

BAAR USA LADY JAYE 489

VERMILION DATELINE 7078

G D LADY HI FLYER 302

O C C LEGEND 616L

GIBBET HILL MIGNONNE E37

B/R NEW DESIGN 036

HARRON BLACKBERRY 9K

| CE   | BW   | WW  | YW   | MCE  | MILK |
|------|------|-----|------|------|------|
| +2.0 | +3.4 | +56 | +103 | +5.0 | +31  |

A TOUR OF DUTY cow we bought from the Tambri Farm. This cow is a real joy to be around. She goes about her business with little or no help, whether it be getting in calf, birthing or going through the chute. She is a long structure cow with a great udder. She calved May 29th with a heifer calf who was sired by our PRESIDENT herd bull, LBJ 13J and is also in this sale.

Pasture exposed from July 27th until sale day to LOCHLEA PRESIDENT LBJ1L

CONSIGNED BY LOCHLEA ANGUS.





## LOCHLEA BLACKBERRY 14M

LBJ 14M | May 29, 2024 | 2367686



S A V PRESIDENT 6847

### LOCHLEA JUDGE 13J

HENRIA DELIA 13E

R B TOUR OF DUTY 177

### TAMBRI BLACKBERRY 10E

TAMBRI BLACKBERRY 3W

COLEMAN CHARLO 0256

S A V BLACKCAP MAY 4136

R B TOUR OF DUTY 177

BRANTNOR'S DELIA 10B

WERNER WAR PARTY 2417

B A LADY 6807 305

B C LOOKOUT 7024

TAMBRI BLACKBERRY 9M

| CE   | BW   | WW  | YW   | MCE  | MILK |
|------|------|-----|------|------|------|
| +2.0 | +3.3 | +66 | +117 | +2.0 | +29  |

Having seen what her dam has done for us, we expect big things from 12M. She's just an end of May baby, but you can already tell she's got cow written all over her.

**CONSIGNED BY LOCHLEA ANGUS.**



## LOCHLEA BLACKBERRY BEAUTY 18K

LBJ 18K | April 24, 2022 | 2267631



S A V 004 DENSITY 4336

### LOCHLEA GLENN LEGACY

NEILCAIRN MISS HEADLINER 52Z

R B TOUR OF DUTY 177

### TAMBRI BLACKBERRY 10E

TAMBRI BLACKBERRY 3W

S A V 8180 TRAVELER 004

S A V MAY 7238

SITZ UPWARD 307R

LUCKHARDT PRE HEADLINER 5T

WERNER WAR PARTY 2417

B A LADY 6807 305

B C LOOKOUT 7024

TAMBRI BLACKBERRY 9M

| CE   | BW   | WW  | YW   | MCE  | MILK |
|------|------|-----|------|------|------|
| +3.0 | +3.3 | +58 | +104 | +3.0 | +30  |

This cow is the property of Steve Calquhoun, a good friend and co-worker who helped me immensely on the farm. He got the pick of the calves every year in return for his assistance. This BLACKBERRY cow also had a bull calf. With the names in this pedigree, she will make a nice cow. This year she was bred on July 12, 24 to ICONIC and turned out July 27, 24 with LBJ 1L. Pasture exposed from July 27th until sale day to LOCHLEA PRESIDENT LBJ1L

**CONSIGNED BY LOCHLEA ANGUS.**



## LOCHLEA BLACKBERRY LBJ14L

LBJ 14L | May 03, 2023 | 2334031



S A V IRON MOUNTAIN 8066

### S A V ANGUS VALLEY 1867

S A V MAY 2397

S A V TEN PERCENT 3085

### LOCHLEA BLACKBERRY 64G

TAMBRI BLACKBERRY 10E

TC GRIDIRON 258

S A V MADAME PRIDE 3249

S A F 598 BANDO 5175

S A V MAY 7238

A A R TEN X 7008 S A

S A V EMBLYNETTE 1314

R B TOUR OF DUTY 177

TAMBRI BLACKBERRY 3W

| CE   | BW   | WW  | YW   | MCE  | MILK |
|------|------|-----|------|------|------|
| +6.0 | +0.6 | +59 | +115 | +4.0 | +34  |

An ANGUS VALLEY heifer, born later than some, but was still a good size. The first yearling bull we ever sold was an ANGUS VALLEY. This heifer is out of TAMBRI BLACKBERRY 10E, also in this sale. Look at her and you will see what potential this cow has.

Pasture exposed from June 21st until sale day to LOCHLEA ICONIC 8L

**CONSIGNED BY LOCHLEA ANGUS.**





W-C

BONNIE CHANCE BARDOLENE 10A

BARDOLENE LAD OF FAIRALTA 2U  
BONNIE CHANCE BLACKCLASS 22**GLEN ISLAY TROOPER 31J**

GLEN ISLAY MAGGIE 76A

DOUBLE AA BARDOLIER 119'08  
GLEN ISLAY MAGGIE 12L

REMINGTON HEADS UP 44Y

ANGUS ACRES HEADS UP 137R  
SEALIN CREEK ROSEBUD 111U**GLEN ISLAY PRIDE 2E**

GLEN ISLAY ESTON PRIDE 13X

ABANGOMERE ESTON  
GLEN ISLAY PRIDE 1M

Here is a very special offering from Glen Islay. Her mother was the record high selling cow in the Blue Water Sale last year going to Bronyx Angus in Saskatchewan, where her bull calf this year weaned in August at 836 lb. A maternal brother to this lot is Glen Islay Gold Rush, the highly featured herd sire at Fleury Ranch in Saskatchewan. Another maternal brother to Pride 31L is Glen Islay Blacklock 23G that we used on heifers at home then for two years on our Manitoulin cow herd, and now works for Calvin Wilson at Brigden Ont. Pride 13X has a legacy at Glen Islay, already, having several female descendants, and having used three sons and a grandson so far. She is still a very youthful coming 15-year-old. Note that the service sire is a grandson of Pride 13X, talk about "power in the blood" for that first calf due in January. The Trooper 31J sire is a high-performance bull we sold to the large herd of Darwin Gork in Manitoba. More about Trooper in the next lot.  
Bred on April 14 to Glen Islay Chance 12H.

**CONSIGNED BY GLEN ISLAY ANGUS.**

DAM - JPC 2E



MATERNAL BROTHER - JPC 7K



SIRE - JPC 31J





BONNIE CHANCE BARDOLENE 10A

BARDOLENE LAD OF FAIRALTA 2U  
BONNIE CHANCE BLACKLASS 22**GLEN ISLAY TROOPER 31J**

GLEN ISLAY MAGGIE 76A

DOUBLE AA BARDOLIER 119'08  
GLEN ISLAY MAGGIE 12L

DOUBLE AA OLD POST BANDOLIER

DOUBLE AA BLACKMAN 252'96  
DOUBLE AA ANNIE K 548'99**GLEN ISLAY ROSEBUD 22F**

GLEN ISLAY ROSEBUD 61B

GLEN ISLAY WINSTON 14U  
GLEN ISLAY ROSEBUD 66U

This is a very attractive female, sired by the high performance Trooper bull. I bought Bonnie Chance Bardolene 10A in 1973 from Peak Dot Ranch, and am still using him. Good cattle never change. Maggie 76A has been a tremendous producer for us, with her first son being a herd sire for Darren Hargrave, daughters sold to Linden Cattle Co. in Alberta, another to Brian Frank in Montana, another one topped this Blue Water sale to Bill Irwin. Along with her two daughters in our herd, her bull calf this year Glen Islay Milestone 5M is extra special and will see a lot of use next year. Maggie 76A has produced her way to be an embryo donor at eleven years old. The dam of this lot Rosebud 22F sold to RMF farms at Orono Ont. For \$9500 last year, and is one of many Old Poat daughters that have been very good to us. The granddam Rosebud 61B is still going strong at Glen Islay. Bred to Glen Islay 13X Eston 17L [ an own son of Pride 13X ] on May 15.  
Bred on May 16 Glen Islay 13X Eston 17.

**CONSIGNED BY GLEN ISLAY ANGUS.****DAM - JPC 22F****SIRE - JPC 31J**





## GLEN ISLAY PRIDE 45L

JPC 45L | March 19, 2023 | 2317567



REMINGTON HEADS UP 44Y

### **GLEN ISLAY HEADLINER 3E**

GLEN ISLAY PRIDE 5A

ANGUS ACRES TOM BOY 64D

### **GLEN ISLAY MAGIC 7F**

GLEN ISLAY PRIDE 1Y

ANGUS ACRES HEADS UP 137R  
SEALIN CREEK ROSEBUD 111U

ANKONIAN BANDOLIERMERE 11769  
GLEN ISLAY PRIDE 1Y

ANGUS ACRES TOM BOY 196Z  
ANGUS ACRES VELVET 65U

DOUBLE AA OLD POST BANDOLIER  
GLEN ISLAY PRIDE 1M

We have more Pride females in our herd than any other cow family. This female is powerfully built with a little extra bone and substance to her. We used her sire Headliner 3E for three years in our herd on Manitoulin Island, before moving him on to work for Pete Van Stavern. Remington Heads Up 44Y, at Z Bar Ranch in Saskatchewan, was one of the best bulls I have ever seen, and his influence moved our herd ahead considerably through his daughters and his sons Headliner 3E and Headliner 12E now at Fleury Ranch in Saskatchewan. Angus Acres Tom Boy 64D was a very influential bull for Sealin Creek Ranch in British Columbia, being the sire of many high selling bulls. Note that this lot is line bred to Glen Islay Pride 1Y, who is a powerful daughter of Old Post and also a maternal sister to Pride 13X. Bred April 12 to Glen Islay Chance 12H, a grandson of 13X. Bred on April 12 to Glen Islay Chance 12H

**CONSIGNED BY GLEN ISLAY ANGUS.**



**2ND DAM - JPC 1Y**



**PATERNAL GRANDSIRE - 44Y**





## 30 4D ACRES LAINEY 3L

BRD 3L | February 09, 2023 | 2303223



**SERVICE SIRE - PVF INSIGHT 0129**

Lainey 3L checks all the boxes. She is an attractive heifer that is well balanced, smooth shouldered and big footed. She has lots of depth of rib and tracks well on the move. This Turning Point daughter is out of a SAC Conversation dam and goes back to an OHL Checkbook granddam. AI bred to PVF Insight for a March calf which will make a valued addition to any herd. She sells vaccinated with Triangle 10 and Tasvax.

Bred A.I to PVF Insight June 15, 2024, due to calve March 24, 2025. Confirmed safe.

**CONSIGNED BY 4D ACRES.**

PLATTEMERE WEIGH UP K360

**STEVENSON TURNING POINT**

STEVENSON PRIDE I167X

SAC CONVERSATION

**4D ACRES JASMINE**

PREMIER ZARA 909

SITZ UPWARD 307R

BARBARA OF PLATTEMERE 337

S A V BISMARCK 5682

FSHK PRIDE 180

SILVEIRAS CONVERSION 8064

LAFLINS FARRAH 0250

OHL CHECK BOOK 0187C

KEMP BROTHERS FREEDOM 93D



## 31 RIVERVIEW JUNE BUG 15L

DND 15L | January 20, 2023 | 2307870



**SERVICE SIRE - GVC STOCK FUND 038H**

| CE   | BW   | WW  | YW   | MCE  | MILK |
|------|------|-----|------|------|------|
| +1.0 | +2.5 | +65 | +120 | +5.0 | +21  |

We truly appreciate our June Bug females which makes them hard to part with but we are excited for this ones future. 15L is a well put together, feminine female who comes from one of our favourite cows. She is structurally correct, stout, soft made and has some power behind her. She is also a dream to work with, with her extremely quiet disposition. 15L is vet checked to her AI date and we are loving our Stock Fund calves coming from our two year olds who she is also serviced to. We know she will go on to produce and make a great cow.

Bred A.I to GVC Stock Fund 038H on May 24. Exposed to a commercial bull after May 24. Preg check safe to this date.

**CONSIGNED BY RIVERVIEW ANGUS.**

S A V SEEDSTOCK 4838

**HARPREY SEEDSTOCK 1G**

GF RITA 66Z

BUSHES EASY DECISION 98

**RIVERVIEW JUNE BUG 6G**

FIRST LINE JUNE BUG 6C

S A V REGISTRY 2831

S A V BLACKCAP MAY 4136

CONNEALY FINAL PRODUCT

WHITESTONE RITA 666T

VIN-MAR O'REILLY FACTOR

BUSHES BIG BLACKBIRD 7885

VISION UNANIMOUS 1418

FIRST LINE JUNEBUG 45X





## 32 CLC ZARA 231K

CLC 231K | September 10, 2022 | 2303223



At Cambray Livestock Company, we've grown to truly value these Sitz-sired long yearlings. This heifer showcases a deep, expansive middle and a long, well-balanced frame that promotes both strength and growth. Thanks to that extra maturity, she's built to last and perform for years to come. She's the complete package, blending size, structure, and durability—qualities that are hard to resist. Running with Coleman Natural Law 1409 from May 11th, 2024, to July 6th, 2024, a Coleman Donna 504 Son X Bar-E-L Natural Law 52Y.

Pasture exposed from May 11 - July 6th to Coleman Natural Law 1409.

**CONSIGNED BY CAMBRAY LIVESTOCK.**

BASIN PAYWEIGHT 1682

**SITZ PAYWEIGHT 741E**

SITZ FOREVER LADY 612T

BENFIELD SUBSTANCE 8506

**KEMP BROTHERS ZARA 18D**

KEMP BROTHER'S MS ZARA 24Y

BASIN PAYWEIGHT 006S  
21AR O LASS 7017

CONNEALY THUNDER  
SITZ FOREVER LADY 63M  
H A IMAGE MAKER 0415  
BENFIELD EDELLA 1105

KEMP BROTHERS WARRANT 5W  
STALBURN ZARA 46P



## 33 CLC ZARA 332L

CLC 332L | January 20, 2023 | 2307870



332L is a long-spined, powerful topped heifer with loads of strength and capacity. Her front end is clean and refined, giving her a sleek, eye-catching profile. She's backed by an exceptional dam who, even at 10 years old, remains in peak condition, showcasing the longevity and resilience of these genetics. With time-tested lineage behind her, this heifer is poised to boost your bottom line for years to come.

Bred A.I to Musgrave 316 Colossal on April 3.  
Preg checked safe.

**CONSIGNED BY CAMBRAY LIVESTOCK.**

S A V RAINFALL 6846

**S A V BLOODLINE 9578**

S A V EMBLYNETTE 2369

ANGUS HILLS POTENTIAL 2A

**ANGUS HILLS ZARA 25C**

ANGUS HILLS ZARA 7Z

COLEMAN CHARLO 0256  
S A V BLACKCAP MAY 4136

S A V 707 RITO 9969  
S A V EMBLYNETTE 7566  
S A V POTENTIAL 0205  
CURRAGHDALE PATRICIA 16U

S CHISUM 6175  
CURRAGHDALE ZARA 14W



**SERVICE SIRE - MUSGRAVE 316 COLOSSAL**





## 34 WEBER MADAME PRIDE 351

WEBR 351K | November 16, 2022 | 2353268



DAM OF LOT 35 & 35 - IMP 8588U

| CE    | BW   | WW  | YW   | MCE   | MILK |
|-------|------|-----|------|-------|------|
| +13.0 | +0.9 | +58 | +106 | +14.0 | +30  |

Anyone who has talked Angus sires with me will know my all-time favourite is Net Worth, so when I had the opportunity to purchase embryos by Net Worth out of the famed 0075 donor, I jumped at it. 351 combines arguably two of the most influential females in the Schaff herd in 0075 and 4136 through her sire Renew. She is moderate-framed and easy keeping female who should go on and be an excellent brood cow. We traveled to the sale SAV this year and were so impressed with the Duke females that we ordered semen on the way home. They were as consistent as any sire group in the female sale and we admired them for that consistency in breed character, femininity, structural correctness and docility. Expect a very nice calf from 351 next January.

Bred A.I. to Millars Duke 816 on April 20th, 2024.  
Preg checked safe to this date with no bull exposure.

**CONSIGNED BY WEBER FAMILY ANGUS.**

S A V RENOWN 3439

RITO 707 OF IDEAL 3407 7075

S A V BLACKCAP MAY 4136

**S A V RENEW 8132**

S A V BLACKCAP MAY 4593

CONNEALY CAVALRY 1149

S A V BLACKCAP MAY 8051

S A V NET WORTH 4200

S A V 8180 TRAVELER 004

S A V MAY 2410

**S A V MADAME PRIDE 8588**

S A V MADAME PRIDE 0075

S A F 598 BANDO 5175

S A V MADAME PRIDE 8264



## 35 WEBER MADAME PRIDE 361

WEBR 361K | December 23, 2022 | 2353264



SERVICE SIRE OF LOT 35 & 35 -  
MILLARS DUKE 816

| CE   | BW   | WW  | YW  | MCE  | MILK |
|------|------|-----|-----|------|------|
| +6.0 | -0.6 | +42 | +84 | +5.0 | +38  |

361 combines arguably three of the most influential females in the SAV herd in 4136, 0075 and 2369. Her dam by Net Worth is featured on the SAV website and has had 3 bulls make the cut for their sale going to Kuck Ranch and Tracie Guthrie both of Nebraska. 361 is a attractive made and long spined. The mating of her to Duke should make for neat calf.

Bred A.I. to Millars Duke 816 on March 6th, 2024.  
Preg checked safe to this date with no bull exposure.

**CONSIGNED BY WEBER FAMILY ANGUS.**

S A V RAINDANCE 6848

COLEMAN CHARLO 0256

S A V BLACKCAP MAY 4136

**S A V EMBLEM 8074**

S A V EMBLYNETTE 2369

S A V 707 RITO 9969

S A V EMBLYNETTE 7566

S A V NET WORTH 4200

S A V 8180 TRAVELER 004

S A V MAY 2410

**S A V MADAME PRIDE 8588**

S A V MADAME PRIDE 0075

S A F 598 BANDO 5175

S A V MADAME PRIDE 8264





## 36 SA SOPHIE 302

STAF 302L | February 18, 2023 | 2328812



**SERVICE SIRE - PVF MARVEL 9185**

Sophie 302 is an easy fleshing, long bodied and wide topped female. Her cow family is known for consistently producing very maternal, functional cows with impeccable udders and docility. She stems from the family that started Stafford Angus back in 2015 with her Grand dam being the Matriarch PVF Sophie 403. Before Ian reached out to be part of this sale we had planned on keeping 302 for a young donor as we felt she was going to be the next great one for us and we had sold every other female produced by our Sophie cow family since 2016. Once Ian came to the farm he was able to convince us to add her to the Bluewater Sale and allow her to become a future donor for another producer. Many of her family members are working all over Ontario, Quebec and Saskatchewan. Bred early to Sexed Female PVF Marvel we feel there is a really good chance to have a bell ringer right off the bat as that cross has worked very well on our "Sophie's" in recent years.

Bred AI to SEXED PVF Marvel 9185 on March 30, 2023

**CONSIGNED BY STAFFORD ANGUS.**

EXAR CLASSEN 1422B

**EF COLOSSAL 520**

EXAR BLACKBIRD 5877

OSU CURRENCY 8173

**SA AF SOPHIE 601**

PVF SOPHIE 403

DAMERON FIRST CLASS

EXAR PRINCESS 2006

SCHURRTOP MC 2500

EXAR BLACKBIRD 4448

STEVENSON MONEYMAKER R185

O S U EMPRESS 4123

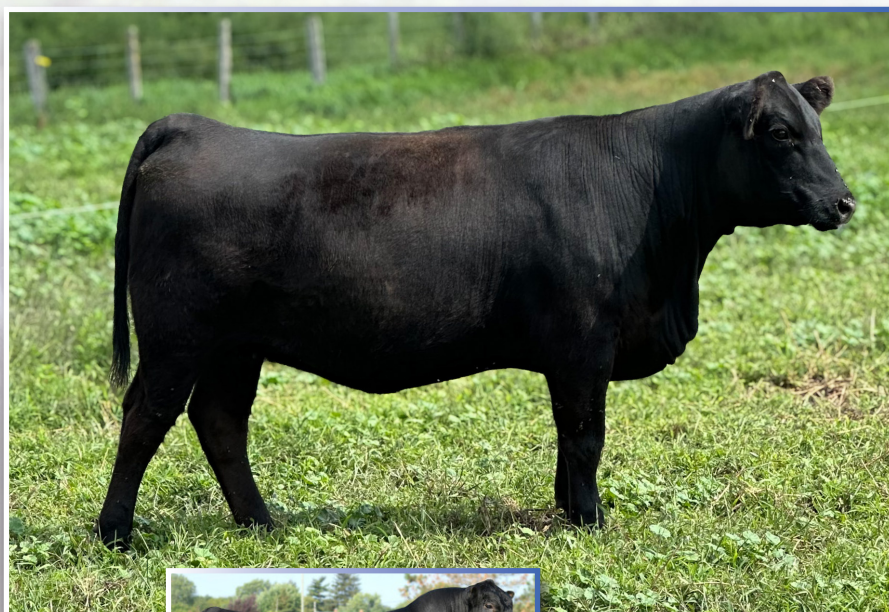
PVF OUT COLD 1132

PVF SOPHIE 2048



## 37 LUCKHARDT BARBARA 20K

JLL 20K | December 21, 2022 | 2302042



**SERVICE SIRE - CONNEALY CRAFTSMAN**

| CE   | BW   | WW  | YW   | MCE  | MILK |
|------|------|-----|------|------|------|
| +1.0 | +2.7 | +75 | +134 | +9.0 | +22  |

Born late Dec 2022 and due Feb 13/25 to Connealy Craftsman with no exposure as a young two year old, this heifer has a world of potential. In the top 5% for WW and YW and with a Growth Fund dam with a very nice udder we think she could help a young or mature breeder build a herd.

Bred A.I. to Connealy Craftsman on May 7 with no bull exposure.

**CONSIGNED BY LUCKHARDT ANGUS.**

S A V RENOWN 3439

**S A V RENEW 8132**

S A V BLACKCAP MAY 4593

DEER VALLEY GROWTH FUND

**LUCKHARDT GF BARBARA 5H**

LUCKHARDT BARBARA 5E

RITO 707 OF IDEAL 3407 7075

S A V BLACKCAP MAY 4136

CONNEALY CAVALRY 1149

S A V BLACKCAP MAY 8051

BASIN PAYWEIGHT 1682

DEER VALLEY RITA 36113

S A V RESOURCE 1441

LUCKHARDT TOTAL BARBARA 4X





## 38 SUNRISE JENNIFER 2T 6L

WIT 6L | January 17, 2023 | 2322789



CONNELLY ONWARD

### SUNRISE ONWARD 2T

SUNRISE MAGGIE 1921 27L

GLEN ISLAY CHANCE 12Z

### SUNRISE JENNIFER12Z 4D

SUNRISE JENNIFER 258M 4B

CONNELLY LEAD ON  
ALTUNE OF CONANGA 6104

PAPA FORTE 1921  
GLEN ISLAY MAGGIE 44J  
BONNIE CHANCE 92B  
GLEN ISLAY PRIDE 1M

LOOKOUT PACESETTER 258M  
SUNRISE JENNIFER 234D 8K

A powerful broody heifer who is wide muzzled and deep ribbed. As a calf 6L was number one in our heifer group indexing 113 on her weaning weight. The sire of this heifer was a super Connealy Onward son that we bred in 2007 and are still using him in our herd today. The dam of 6L is a great producer and her heifer in Bluewater last year was our 2nd top selling female.

Bred AI to Oak Manor Blue Chip 3L on April 13, 2024. Preg checked safe.

**CONSIGNED BY SUNRISE ANGUS.**



## 39 SUNRISE JENNIFER 13J 22L

WIT 22L | March 14, 2023 | 2322796



GLEN ISLAY HEADLINER 12E

### SUNRISE HEADLINER 12E 13J

SUNRISE JENNIFER 8Z 5C

ANGUS ACRES BANDY 214Y

### SUNRISE JENNIFER 214Y 9H

SUNRISE JENNIFER 7X

REMINGTON HEADS UP 44Y  
DOUBLE AA ANNIE K 203'06

GLEN ISLAY ROCKY 8Z  
SUNRISE JENNIFER 234D 8K  
ANGUS ACRES BANDOLIER 75T  
ANGUS ACRES IVY 16T

DOUBLE AA OLD POST BANDOLIER  
SUNRISE JENNIFER 234D 8K

This feminine March heifer has a good foot underneath her and is moderate framed. Her sire is a good Headliner son that we used in our herd in 2022 and went on to work in the herd of Duane Metheral. The dam of this heifer is an attractive Canadian bred cow with a good disposition. 22L was bred AI to HF Roper 27F on May 8, 2024, a bull that has been a popular calving ease bull who has generated high sellers in sales in western Canada.

Bred AI to HF Roper 27F on May 8, 2024. Preg checked safe.

**CONSIGNED BY SUNRISE ANGUS.**



## 40 SUNRISE JENNIFER 5R 3L

WIT 3L | January 10, 2023 | 2322787



SANDY BAR ADVANTAGE 43M

### HF KODIAK 5R

WILBAR RUBY 955N

GLEN ISLAY MARSHALL 24Z

### SUNRISE JENNIFER 2D

SUNRISE JENNIFER 258M 2A

TC ADVANTAGE  
SANDY BAR JEMINA 44K

VERMILION YELLOWSTONE  
WILBAR RUBY 161J  
COALBRIDGE MARSHALL 15  
GLEN ISLAY PRIDE 14S

LOOKOUT PACESETTER 258M  
SUNRISE JENNIFER 234D 8K

Some pedigrees never go out of fashion as seen here with our HF Kodiak 5R daughter. This heifer shows more length of body and a little more frame. As a calf she indexed 108 on her weaning weight out of a very productive Marshall daughter. We do have a full sister to 3L in our herd who I would rank as one of our top 3 cows. 3L was bred AI to Sydgen Enhance on April 7, 2024 who is the 2 time #1 bull in the breed for registrations and high accuracy at ABS Global.

Bred AI to Sydgen Enhance on April 7, 2024. Preg checked safe.

**CONSIGNED BY SUNRISE ANGUS.**





## 41 FIRST LINE ELBA 16L

FLA 16L | January 30, 2023 | 2313754



BASIN PAYWEIGHT 1682

### DEER VALLEY WALL STREET

DEER VALLEY RITA 36113

PA FORTITUDE 2500

### FIRST LINE ELBA 5H

FIRST LINE ELBA 20F

BASIN PAYWEIGHT 006S  
21AR O LASS 7017

PLATTEMERE WEIGH UP K360  
DEER VALLEY RITA 9457  
GAR-EGL PROTEGE  
G G CLARA 0171

EXAR UPSHOT 0562B  
YOUNG DALE ELBA 80P

| CE    | BW   | WW  | YW   | MCE   | MILK |
|-------|------|-----|------|-------|------|
| +11.0 | -0.3 | +60 | +113 | +11.0 | +21  |

A very bold Wall Street daughter. Easy fleshing, high-capacity female. Her big bodied dam by Fortitude is an ideal beef cow. Lots of maternal character from the Elba cow family.

Pasture exposed April 23rd to July 15th. Vet estimated breeding on June 1 st to our junior herd sire FLA 42L.

CONSIGNED BY FIRST LINE ANGUS.



## 42 FIRST LINE ANDEE 28L

FLA 28L | February 19, 2023 | 2313997



SITZ STELLAR 726D

### SITZ MAJOR 707F

SITZ LADY 383D

CHICO GERONIMO 2G

### CHICO ANDEE 54J

CHICO ANDEE 44E

MOHNEN SUBSTANTIAL 272  
SITZ PRIDE 200B

SITZ BULLSEYE 10594  
SITZ LADY 319Y  
SSF SCOTTS ARSENAL 4E  
CHICO LUCY 55B

KR CASH 4003  
CHICO ANDEE 37A

| CE   | BW   | WW  | YW   | MCE  | MILK |
|------|------|-----|------|------|------|
| -4.0 | +3.2 | +66 | +116 | +1.0 | +21  |

Purchased in Dam from Chico Ranches. John Lee is one of the few with access to Sitz Major 707F. Fancy, feminine and maternal with an outstanding pedigree.

Pasture exposed April 23rd to July 15th. Vet estimated bred May 20th to our junior herd sire First Line Bullwinkle 42L.

CONSIGNED BY FIRST LINE ANGUS.



## 43 FIRST LINE BARBARA 29L

FLA 29L | February 20, 2023 | 2313759



EXAR UPSHOT 0562B

### FIRST LINE ARDEN 14G

FIRST LINE ARIAT MARIE 12Y

MAR RESPOND 1734

### FIRST LINE BARBARA 12E

FIRST LINE BARBARA 7X

SITZ UPWARD 307R  
EXAR BARBARA T020

S A V PIONEER 7301  
FIRST LINE JANE MARIE 1M  
S A V RESOURCE 1441  
MAR UPWARD PRECISION 778

S A V HERITAGE 6295  
GLEN ISLAY BARBARA 14T

| CE   | BW   | WW  | YW   | MCE  | MILK |
|------|------|-----|------|------|------|
| -4.0 | +5.2 | +56 | +103 | +1.0 | +21  |

Powerful young prospect out of our esteemed herd sire First Line Arden 14G. Barbara cow family, her dam was a big, beautiful cow with a perfect udder and stacked EPD's. A real eye appealing heifer with some extra length. Her late Grandam FLA 7X designated premiere dam since 2019.

Pasture exposed March 17th to July 15th. Vet estimated bred April 22nd to FLA 13L an impressive Sitz Resilient son

CONSIGNED BY FIRST LINE ANGUS.





## 44 FIRST LINE JUNEBUG 7L

FLA 7L | January 12, 2023 | 2313756



HOOVER NO DOUBT

### E G EYES ONLY

BALDRIGE ISABEL D275

G T MAXIMUM

### FIRST LINE JUNEBUG 24H

FIRST LINE JUNEBUG 3E

MOGCK BULLSEYE  
MISS BLACKCAP ELLSTON J2

HAYNES OUTRIGHT 452  
BALDRIDGE ISABEL Y69  
SCOTCH CAP  
GT MISS TRAVELER 58

MAR RESPOND 1734  
FIRST LINE JUNEBUG 45X

| CE   | BW   | WW  | YW   | MCE  | MILK |
|------|------|-----|------|------|------|
| -2.0 | +4.3 | +76 | +140 | -2.0 | +18  |

Big frame heifer coming with an intriguing pedigree going back to GT Max. Exclusive breeding from her sire EG Eyes onYou. Highly productive cow family - a lot of longevity bred into this Junebug family. Pasture exposed March 17 th to July 15th. Observed bred March 19th to our 2-year-old herd sire First Line Entice 2K

CONSIGNED BY FIRST LINE ANGUS.



## 45 HILLBROOK MS MORRISON 10L

KAJH 10L | January 09, 2023 | 2302142



DAM - KAJH 2C



DOUBLE AA BARDOLIER 119'08

### HILLBROOK BARDOLIER 9H

FLEURY ANNIE K 23A

FLEURY BARDOLENE 115Z

### HILLBROOK MS MORRISON 2C

SASKALTA MS MORRISON 175U

DOUBLE AA BARDOLIER 47'06  
DOUBLE AA ANNIE K 203'06

DOUBLE AA BARDOLENE 50'08  
MILL IRON ANNIE 817'08  
DOUBLE AA BARDOLENE 50'08  
DOUBLE AA ANNIE K 460'06

SASKALTA BAROS 266N  
SASKALTA MS MORRISON 155N

A granddaughter of a foundation cow at Hillbrook, 10L is a moderate framed, deep, wide based heifer. Our first offering of a bred heifer and she's from the heart of our bred pen. Her mother has a picture perfect udder at 9 years old and never misses. Stacked with Bardolene 115Z and Bardolier 9H in her immediate pedigree she's sure to be the front pasture kind for a long time. Carrying service from our home raised, Camilla Bandolier 84G great grandson, Hillbrook Bandolier 20L. Preg check safe in calf to Hillbrook Bandolier 20L. Vet estimates a January calf. Vaccinated with Bovi-Shield

CONSIGNED BY HILLBROOK CATTLE COMPANY.



## 46 HILLBROOK PRINCESS 14L

KAJH 14L | January 21, 2023 | 2302144



PATERNAL GRANDDAM



GLEN ISLAY SUMMIT 11E

### HILLBROOK BANDOLIER 8H

GLEN ISLAY ANNIE K 15C

MCC OLD POST 1Y

### RANCHERS CHOICE PRINCESS 124C

SASKALTA PRINCESS 506U

CAMILLA BANDOLIER 84G  
GLEN ISLAY PRIDE 1Y

BONNIE CHANCE BARDOLENE 10A  
DOUBLE AA ANNIE K 203'06  
DOUBLE AA OLD POST BANDOLIER  
KEWETIN BLACK ANGEL 10K

DOUBLE AA BLACKMAN 229'04  
SASKALTA PRINCESS 269N

From the Princess family made famous from the good Saskalta herd of Kim Robertson's, 14L is an extremely well balanced heifer from her wide muzzle to her broad tail. Boasting an outcross, straight Canadian pedigree, 14L goes back to one of Kim's top cows, Princess 506U, who raised herdbulls and replacement females for Saskalta until their 2016 dispersal. A Camilla Bandolier 84G great granddaughter, she's thick, stout and has all the makings of an excellent brood cow. Preg check safe in calf to Hillbrook Bandolier 20L. Vet estimates a January calf. Vaccinated with Bovi-Shield

CONSIGNED BY HILLBROOK CATTLE COMPANY.





## 47 WILLOWSIDE PRIDE 10L

WSA 10L | January 17, 2023 | 2317059



SIRE



U-2 COALITION 206C

### U2 COALITION 343F

WIL-DORR 127X TIBBIE 29B

WIWA CREEK ULTERIOR 77'13

### YOUNG DALE PRIDE 143D

YOUNG DALE PRIDE 178B

HF SYNDICATE 213Z  
U2 ERELITE 109Z

WIL-DORR 4336 28T DEN-ERIC 21Z  
MVF TIBBIE 172X  
SOO LINE MOTIVE 9016  
WIWA CREEK ERICA 79'08

YOUNG DALE XCALIBER 32X  
SCR LUCY PRIDE 80751

| CE   | BW   | WW  | YW  | MCE  | MILK |
|------|------|-----|-----|------|------|
| +1.0 | +3.4 | +52 | +89 | +4.0 | +20  |

Admire 10L for her added length, material body type and attractive design. She is genetically backed by U2 Coalition 343 F. Look her up on Sale Day.

Bred A.I. to Boyd Justification. April 29/24. Checked safe to this breeding date.

CONSIGNED BY WILLOWSIDE FARMS

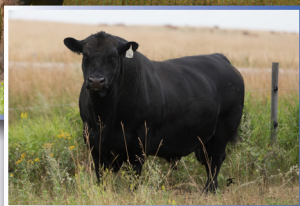


## 48 WILLOWSIDE ANNIE 19L

WSA 19L | February 03, 2023 | 2317047



SIRE



U-2 COALITION 206C

### U2 COALITION 343F

WIL-DORR 127X TIBBIE 29B

TJF AMBUSH 7X

### WILLOWSIDE ANNIE 1A

CROSSLAND ANNIE 7X

HF SYNDICATE 213Z  
U2 ERELITE 109Z

WIL-DORR 4336 28T DEN-ERIC 21Z  
MVF TIBBIE 172X  
REMINGTON AMBUSH 290T  
TJF ESTHER 171U

PVF ALL PAYDAY 729  
J P D ANNIE K 6T

| CE   | BW   | WW  | YW  | MCE  | MILK |
|------|------|-----|-----|------|------|
| +1.0 | +3.7 | +51 | +91 | +4.0 | +25  |

19L is sound footed, tidy uddered with lots of milk. She is genetically backed by U2 Coalition343F which gives her a bold design and impressive muscle shape.

Bred A.I. to J Trademark 1037 on May 17, 2024. Checked safe to this date.

CONSIGNED BY WILLOWSIDE FARMS



## 49 WILLOWSIDE ALLIANCE 26L

WSA 26L | February 18, 2023 | 2317073



SIRE



STEVENSON TURNING POINT

### CONLEY SOUTH POINT 8362

P R LADY 909 4200-587

S TITLEST 1145

### WILLOWSIDE ALLIANCE 2E

WILLOWSIDE ALLIANCE 13C

PLATTEMERE WEIGH UP K360  
STEVENSON PRIDE 1167X

S A V NET WORTH 4200  
P R 587 205-537  
RA LINCOLN W144  
S CORA 572

WILLOWSIDE MR CARMEN 4Y  
WILLOWSIDE TOP ALLIANCE 4U

| CE   | BW   | WW  | YW  | MCE  | MILK |
|------|------|-----|-----|------|------|
| +9.0 | +0.1 | +49 | +82 | +6.0 | +24  |

26L is a daughter of Grand Champion of Agribition, Conely South Point. 26L is a ver correct, stylish, moderate framed and long sided.

Bred A.I to Sterling Pacific 904 on May 16, 2024. Safe to this date.

CONSIGNED BY WILLOWSIDE FARMS





## 50 WILLOWSIDE LUCY 17L

WSA 17L | January 31, 2023 | 2317113



SIRE



U-2 COALITION 206C

### U2 COALITION 343F

WIL-DORR 127X TIBBIE 29B

S A V QUARTERBACK 7933

### ANGUS HILLS LUCY 13H

CURRAGHDALE LUCY 22Z

HF SYNDICATE 213Z

U2 ERELITE 109Z

WIL-DORR 4336 28T DEN-ERIC 21Z

MVF TIBBIE 172X

S A V REGARD 4863

S A V BLACKCAP MAY 3525

RDDA OVERLOAD 2437R

CURRAGHDALE LUCY 18W

| CE   | BW   | WW  | YW   | MCE  | MILK |
|------|------|-----|------|------|------|
| -1.0 | +4.6 | +71 | +121 | +4.0 | +25  |

Another U2 Coalition daughter that's skeletally flawless in her lines which completes her profile. She is long fronted and deep ribbed. Observed bred May 21, 2024 to our herd bull Willoside Tribute 9K (Mc Cumber Tribute 702) son. Preg checked safe.

**CONSIGNED BY WILLOWSIDE FARMS**



## 51 ANGUS KNOLL GRACE 2L

HNW 2L | April 01, 2023 | 2336152



KOUPAL KOZI 418

### ANGUS KNOLL KOZI 15E

GRIST FOCUS MARCK 115C

HARRON WORTH A LOT 21Y

### ANGUS KNOLL GRACE 2E

MELMAC GRACE 32Z

KOUPAL KOZI 22

KOUPAL EBONETTE 263

CONNEALY IN FOCUS 4925

FIRST LINE GERTIE 32Y

S A V NET WORTH 4200

HARRON BLACKBIRD 3G

EARLEY WIPEOUT 11W

MELMAC GRACE 26U

This heifer has standout animals throughout her pedigree. We have many offspring from this cow family and recently sold her mother and '24 heifer calf to K&K Cattle. Kozi / Networth cattle are docile with great udders and no calving problems.

Exposed after June 1 to Sandybar Black Cat 30K. Vaccinated BOVI Shield and will be preg-checked safe

**CONSIGNED BY ANGUS KNOLL FARMS.**



## 52 ANGUS KNOLL STARLET 11L

HNW 11L | April 01, 2023 | 2336156



KOUPAL KOZI 418

### ANGUS KNOLL KOZI 15E

GRIST FOCUS MARCK 115C

ANGUS KNOLL RADIANCE 10D

### ANGUS KNOLL STARLET 11F

ANGUS KNOLL STARLET 11C

KOUPAL KOZI 22

KOUPAL EBONETTE 263

CONNEALY IN FOCUS 4925

FIRST LINE GERTIE 32Y

S A V RADIANCE 0801

HARRON JULIANA 25Y

HARRON WORTH A LOT 21Y

PHILLIPS STARLET 1X

Another nice sound docile Kozi female along with SAV Radiance/SAV Networth/SAV Bismark and Emblazon in her pedigree. This cow family Starlet 1X came from the Phillips family and produced daughters and grand-daughters for us. Nice attractive April heifer. Exposed after June 1 to Sandybar Blackcat 30K who has sired a very nice first calf crop. Sells Vaccinated Bova Shield and will be preg checked safe.

Exposed after June 1 to Sandybar Black Cat 30K. Vaccinated BOVI Shield and will be preg-checked safe

**CONSIGNED BY ANGUS KNOLL FARMS.**



Len Mar Farm will celebrate 80 years in 2025. Also, it was 50 years ago in July that Donja and I purchased the farm from my mother Mary. During those 50 years, we have enjoyed the advice, hospitality and friendship of many fine Angus folks, but none more than the Curries, the Jacksons and the Hargreaves. It is fitting that this consignment features genetics from these leading Ontario herds.

We have supported this Bluewater Sale almost continuously for at least 40 years.



## 53 LEN MAR APRIL ROXY 4L

ARG 4L | April 07, 2023 | 2331818



GLEN ISLAY MARSHALL 24Z

### GLEN ISLAY MARSHALL 30D

GLEN ISLAY MAGIC 17Z

BAR-E-L RAINMAN 172R

### HARPREY ROXY 58Z

HARPREY ROXY 91S

COALBRIDGE MARSHALL 15  
GLEN ISLAY PRIDE 14S

BONNIE CHANCE BARDOLENE 10A  
GLEN ISLAY MAGIC 17M  
CRESCENT CREEK 06 RITO 50L  
BAR-E-L DUCHESS 119M

RED HARPREY EVERWOOD 36N  
HARRON ROXY 7F

This excellent daughter of Harprey Roxy 58Z is long bodied, stout and feminine in appearance. We acquired her dam from the 2013 Bluewater Sale and she continues to produce hands free, herd leading calves each year, and many are working as herd sires. 4L's sire, Glen Islay Marshall 30D, now deceased, left us 5 calf crops and has progeny in many herds in Ontario. His feet, legs and disposition were faultless.

Pasture exposed from July 2nd to Len Mar Growth Fund 1L

**CONSIGNED BY LEN MAR FARMS.**



## 54 LEN MAR COUNTESS 10L

ARG 10L | April 24, 2023 | 2345540



GLEN ISLAY MARSHALL 24Z

### GLEN ISLAY MARSHALL 30D

GLEN ISLAY MAGIC 17Z

LEN MAR FORUM TRACTION 2Y

### LEN MAR COUNTESS 7A

GLEN ISLAY COUNTESS 75U

COALBRIDGE MARSHALL 15  
GLEN ISLAY PRIDE 14S

BONNIE CHANCE BARDOLENE 10A  
GLEN ISLAY MAGIC 17M  
DMM TRACTION 109J  
BRANTNOR'S MISS DAISY 4M

TC STOCKMAN 365  
LEN MAR COUNTESS 15B

This medium framed sweetheart has a pedigree filled with Glen Islay genetics on both top and bottom, with a shot of Brantnor Daisy as a bonus. Her granddam, GI Countess 75U, is a daughter of TC Stockman 365, acquired through the 2009 Bluewater Sale. 10L is also sired by GI Marshall 30D. Both of these heifers were exposed since July 2 to Len Mar Growth Fund 1L. This young sire is thick, stout and medium framed, with excellent rib and hindquarters. He is a son of Deer Valley Growth Fund who is finding favour in many herds, including LLB Ranch, where 1L's half-brother WHITE STONE had a very successful spring sale. His dam is Tullamore Mayflower 78J out of a Len Mar female that Bill Jackson purchased from the 2019 Bluewater Sale. Pasture exposed from July 2nd to Len Mar Growth Fund 1L

**CONSIGNED BY LEN MAR FARMS.**





## LUCKHARDT HEADLINER 13J

LLJJ 13J | September 03, 2021 | 2235055



| CE   | BW   | WW  | YW   | MCE  | MILK |
|------|------|-----|------|------|------|
| +7.0 | +1.2 | +67 | +114 | +8.0 | +26  |

COLEMAN CHARLO 0256

O C C PAXTON 730P  
BOHI ABIGALE 6014

### S A V CHECKMATE 8158

S A V EMBLYNETTE 6506

S A V RENOWN 3439  
S A V EMBLYNETTE 7566  
G A R GRID MAKER  
S A V ABIGALE 0451

S A V BISMARCK 5682

### LUCKHARDT HEADLINER 12F

LUCKHARDT HEADLINER 13D

S A V INTERNATIONAL 2020  
LUCKHARDT HEADLINER 13X



## LUCKHARDT HEADLINER 19L

LLJJ 19L | December 05, 2023 | 2351765

### SIRE: POSS RAWHIDE

| CE    | BW   | WW  | YW   | MCE   | MILK |
|-------|------|-----|------|-------|------|
| +10.0 | +0.2 | +76 | +126 | +11.0 | +24  |

Another pair from our HEADLINER family. Over the years we have sold a few females from this family that have done very well for their new owners. Just a two year old, she has raised a good calf, bred back A.I. to calve in 12 months and carried her condition. Check out the pedigrees and the numbers but most of all check out the animals. We have not done much better than this. We have four generations in this line with the fifth on the way. Longevity has been built in for a long time. Genomic enhanced and parent verified for four generations, there will be no surprises here. A.I. bred to Connealy Craftsman on March 11. No bull exposure.

CONSIGNED BY LUCKHARDT ANGUS.



DAM - LLJJ 12F



2ND DAM - LLJJ 13D



SERVICE SIRE - CONNEALY  
CRAFTSMAN





## 56 TYRY FAVORITE 7K

TYRY 7K | February 24, 2022 | 2272780



BASIN RAINMAKER 2704

### BASIN RAINMAKER 4404

BASIN JOY 1036

OHL CHECK BOOK 0187C

### WORTH-MOR FAVORITE 11H

WORTH-MOR FAVORITE 3C

BASIN RAINMAKER P175  
BASIN ERICA 7520 BV

BASIN PAYWEIGHT 107S  
BASIN JOY 566T  
PLAINVIEW LUTTON E102  
O H L ANGEL 7171

S A V HARVESTOR 0338  
BROCKHILL FAVORITE 5L

| CE   | BW   | WW  | YW   | MCE  | MILK |
|------|------|-----|------|------|------|
| -1.0 | +5.1 | +58 | +104 | +6.0 | +29  |

Hails from one of the most influential cow families in Canada. Very complete, sound, well structured young cow. Raised a Whitestone 19 Million bull calf this year - structurally correct but smaller framed. Bred A.I. on May 15th to Peak Dot Mountain Top. Pasture exposed to First Line Entice 2K (FLA 2K) from May 15th to July 15th.

CONSIGNED BY FIRST LINE ANGUS.



## 57 SUNRISE JENNIFER 214Y 9H

WIT 9H | January 21, 2020 | 2151453



ANGUS ACRES BANDOLIER 75T

### ANGUS ACRES BANDY 214Y

ANGUS ACRES IVY 16T

DOUBLE AA OLD POST BANDOLIER

### SUNRISE JENNIFER 7X

SUNRISE JENNIFER 234D 8K

ANGUS ACRES BANDOLIER 53P  
ANGUS ACRES GOLDY 75P

ANGUS ACRES TEXAS TEA 19M  
WAVENY IVY 14'81  
DOUBLE AA BLACKMAN 252'96  
DOUBLE AA ANNIE K 548'99

GDAR SVF TRAVELER 234D  
J.P.D. JENNIFER 36G

If you like Canadian genetics, you'll like this daughter out of our Old Post matriarch cow still producing at 14 yrs and due again in Jan. 2025. 9H is sired by the well-known female producer, Angus Acres Bandy 214Y bred by TW Armitage. This cow is productive and easy to work around. We have a full sister in our herd who is at the top of the list for producing female replacements.

Bred A.I. on April 15, 2024 to Glen Islay Summit 11E.

Exposed to Sunrise Stoney 7035E 17L from May 13 to June 3rd.

Preg checked safe to the AI breeding.

CONSIGNED BY SUNRISE ANGUS.



## 58 FIRST LINE JESTRESS 4M

FLA 4M | January 02, 2024 | 2354386



CONNEALY PAYRAISE

### CRAWFORD GUARANTEE 9137

CRAWFORD MS ARMORY D40

PVF INSIGHT 0129

### WEAVERCROFT JESTRESS 34K

DEER PARK JESTRESS 2B

BASIN PAYWEIGHT 1682  
PRIDE FAIR OF CONANGA 351

CONNEALY ARMORY  
G A R NEW DAY N2290  
S A V BRILLIANCE 8077  
PVF MISSIE 790

S A V NET WORTH 4200  
LLB JESTRESS 44W

| CE   | BW   | WW  | YW   | MCE  | MILK |
|------|------|-----|------|------|------|
| +2.0 | +2.1 | +66 | +124 | -1.0 | +28  |

Moderate framed eye appealing Crawford Guarantee daughter. Impressive made first calver Insight dam from Weavercroft. Pedigree stacked full of builders supported by her EPD's. A real sweetheart in her disposition. Will make a nice junior prospect.

CONSIGNED BY FIRST LINE ANGUS.





## 59 FIRST LINE WENDY 12M

FLA 12M | January 03, 2024 | 2354389



CONNEALY PAYRAISE

### CRAWFORD GUARANTEE 9137

CRAWFORD MS ARMORY D40

PVF INSIGHT 0129

### WEAVERCROFT WENDY 23K

WEAVERCROFT WENDY 2G

BASIN PAYWEIGHT 1682  
PRIDE FAIR OF CONANGA 351

CONNEALY ARMORY  
G A R NEW DAY N2290  
S A V BRILLIANCE 8077  
PVF MISSIE 790

S A V INTERNATIONAL 2020  
3 SUNS WENDY 61C

| CE   | BW   | WW  | YW   | MCE  | MILK |
|------|------|-----|------|------|------|
| +5.0 | +2.1 | +74 | +134 | +3.0 | +26  |

Another long sided Crawford Guarantee daughter with huge potential. Purchased in dam from the Weavercroft dispersal. Dam is well made with extra frame and a nice udder. A real sweetheart in her disposition. Lots of length and eye appeal in this calf. Would make a nice junior project.

**CONSIGNED BY FIRST LINE ANGUS.**



## 60 TAMBRI HEROINE 7M

TMJ 7M | February 03, 2023 | 2317047



G A R ASHLAND

### G A R HOME TOWN

CHAIR ROCK SURE FIRE 6095

GF LUCKNOW 905G

### TAMBRI HEROINE 9J

NORTH PERTH HEROINE 213

G A R EARLY BIRD  
CHAIR ROCK AMBUSH 1018

G A R SURE FIRE  
CHAIR ROCK PROGRESS 3005  
MUSGRAVE 316 STUNNER  
GF JENA 905E

HF TIGER 5T  
MVF HEROINE 129T

| CE    | BW   | WW  | YW   | MCE  | MILK |
|-------|------|-----|------|------|------|
| +11.0 | -0.2 | +60 | +110 | +9.0 | +28  |

Tambri Heroine 7M is a powerful deep bodied heifer. Her pedigree is stacked with Angus breed leaders. Her sire GAR Hometown is a very popular Select Sires bull and the top sire for registrations in the United States in 2022. He is renowned for his calving ease, combined with outstanding carcass merit. He is in the top 1 % in the CAA database for Marbling and Ribeye. Heroine's granddam 213Z came to us from North Perth Angus. We bought her at the Bluewater Angus sale as a heifer calf. She has been a star producer for us. She has 11 progeny so far and is pregnant again this year. Heroine 7M is destined to combine the best maternal and carcass traits. If she follows her maternal line she will continue to have strong foot and udder structure for a long time.

**CONSIGNED BY TAMBRI ANGUS.**

S A V PRESIDENT 6847

### MICH WHEATLAND BULL 1510J

PVF MISSIE 5216

MELMAC INSIGHT 16C

### MELMAC EMMY 13F

WORTH-MOR EMMY 1C

COLEMAN CHARLO 0256  
S A V BLACKCAP MAY 4136

C&C MCKINLEY 3000 EXAR  
PVF MISSIE 0084  
PVF INSIGHT 0129  
BROCKHILL PEARL 6A

S A V HARVESTOR 0338  
CURRAGHDALE EMMY 16T



## 61 MELMAC EMMY 26M

MRK 26M | March 03, 2024 | 2384620



Melmac is pleased to offer our first ever sale offering from our new herd sire MICH WHEATLAND BULL 1510J. The pedigree is loaded on both sides. His calves are thick and females are made like MRK 26M, fancy. Emmy 26M is a long fronted, smooth shouldered and big hipped female that will catch your eye. Her dam, Melmac Emmy 13F has been consistently leaving us great calves. Emmy 26M is only a March heifer calf and will be green compared to others, give her time to grow and develop and she will make a great female for you. Halter broke and shown in 4H.

**CONSIGNED BY MELMAC ANGUS.**



62

**DB ICONIC G95**

IMP 95G | 3 Doses



CONSIGNED BY LOCHLEA ANGUS.

63

**N BAR EMULATION EXT**

IMP 479U | 2 Doses



CONSIGNED BY LOCHLEA ANGUS.

64

**S A V PRESIDENT 6847**

IMP 6847D | 3 Doses



CONSIGNED BY LOCHLEA ANGUS.

64a

**S A V PRESIDENT 6847**

IMP 6847D | 5 Doses



CONSIGNED BY WEBER FAMILY ANGUS.

65

**S A V ANGUS VALLEY 1867**

IMP 1867Y | 1 Dose



32 CONSIGNED BY LOCHLEA ANGUS.

66

**S A V PIONEER 7301**

IMP 7301T | 2 Doses



CONSIGNED BY LOCHLEA ANGUS.



67

**S A V RAINFALL 6846**

IMP 6846D | 10 Doses



CONSIGNED BY ONE OAK ANGUS.

69

**S A V RENEW 8132**

IMP 8132F | 6 Doses (female sorted)



CONSIGNED BY WEBER FAMILY ANGUS.

68

**BALDRIDGE BADGER**

IMP 438F | 5 Doses



CONSIGNED BY WEBER FAMILY ANGUS.

70

**MILLARS DUKE 816**

IMP 0816F | 10 Doses



CONSIGNED BY WEBER FAMILY ANGUS.



# WES for Youth Online

Wellness & Emotional Support (WES) for Youth Online provides free, professional e-counselling to youth ages 13-24 in Ontario.

Our organization provides a safe and inclusive space for youth to receive ongoing support and develop coping skills for all they are facing.

In 2012, our founding family, the Camerons, channeled the grief they were experiencing from the loss of their own son Wes into an avenue to help the youth of their community. Since then, WES for Youth Online (WFYO) has provided counselling to thousands of youth across Ontario.

WFYO provides ongoing counselling, which is critical to allow youth the opportunity to develop a trusting relationship with their counselor. We understand that mental health is complicated, and the concerns of youth need time and trust to work through. To provide youth with the support they want without barriers or limitations, our service has no time constraints or counselling session limits.

Our youth can connect with one of our qualified counsellors through the asynchronous email-to-email option, the live chat function, and through telephone or video call, all within the safety of our secure

platform. Our youth are able to access WFYO's service and app anywhere they feel comfortable and have the option to express themselves through creative means using our media submission centre.

WES for Youth Online works to meet youth where they are. By providing evidence-based care to all Ontario youth, we offer support when they want it and how they want it. Together, for better mental health.



## HILLBROOK ANNIE K 13M

KAJH 13M | January 24, 2024 | 2354775



DAM - KAJH 1K

**100% Of The Funds  
From The Sale  
Of This Heifer Will Be  
Donated To  
WES for Youth Online.**

GLEN ISLAY SUMMIT 35F  
**HILLBROOK BANDOLIER 22H**

HILLBROOK ANNIE K 1F

HILLBROOK BARDOLIER 9H

**HILLBROOK ANNIE K 1K**

RANCHERS CHOICE ANNIE K 185C

GLEN ISLAY SUMMIT 18D  
GLEN ISLAY PRIDE 3B

ANGUS ACRES BANDY 214Y  
DOUBLE AA ANNIE K 203'06  
DOUBLE AA BARDOLIER 119'08  
FLEURY ANNIE K 23A

DOUBLE AA BARDOLINE 48Y  
RANCHERS CHOICE HEROINE 52Z

We've once again partnered with WES for Youth and the Bluewater Angus Club to make a donation heifer possible.

In 2022 the donation heifer raised over \$12000 for youth mental health support, and in 2023 almost \$10000 was raised. We are very fortunate to have such generous and numerous supporters in the angus breed who recognize the importance of mental health support for our young people today.

In 2024 we've selected one of our top heifer calves, from the famous Annie K family made famous in the Double AA and Soo Line herds. Hillbrook Annie K 13M is a heifers first calf, and a what a fantastic job she is doing. This calf is long spined, big hipped and sweet made with a tender disposition. Her mother is our favourite "K" cow, and her grandmother was our top pick out of Kim Robertson's Saskalta dispersal in 2016, with several daughters in production.

Please join us in Cargill on October 19/2024 for a great sale, and the opportunity to support a great organization in WES for Youth. Open and on the Bovi-Shield vaccination protocol.

**DONATED BY HILLBROOK CATTLE COMPANY.**

Sponsored By:



*Sam Buschbeck  
Photography*





## JUNIOR DONATION

Help support our Junior Angus Association!

A big and heartfelt thank you to these companies who have generously donated semen and embryo packages to be auctioned off during this sale with all proceeds going to the Junior Angus Association!



A

10 units of 29AN2255  
**BASIN JAMESON 1076**



B

5 units of 7AN735  
**BALDRIDGE GIBSON G859**



C

10 units of Angus semen  
from any bull in the  
2024 Beef Catalog



D

5 units of 551AN01787  
**ELLINGSON PROLIFIC**  
(Female Sorted)



E

5 units of semen  
from any Angus bull in the  
2024 Beef Catalog

1 Flush Donated by Kirkton Bovine Services &  
ProViro IVF & ET Services

## One Conventional Bovine Flush

- Includes the Flush and Freezing of all resulting embryos
- Flush must be performed at ProViro IVF & ET Services, Fradon Donor Facility



519-280-2498

KVCET2.OFFICE@GMAIL.COM








## 71 Commercial Angus Heifer

Used to single strand electric.  
Sired by GF Pretty Boy 807H - Reg #2141035.  
Exposed to GF Black Market 1403J- Reg #2219238 on July 15.  
Pregnancy checked by Miller Vet Clinic October

**CONSIGNED BY ROB CAMPBELL.**



## 72 Commercial Angus Heifer

Used to single strand electric.  
Sired by GF Pretty Boy 807H - Reg #2141035.  
Exposed to GF Black Market 1403J- Reg #2219238 on July 15.  
Pregnancy checked by Miller Vet Clinic October

**CONSIGNED BY ROB CAMPBELL.**



## 73 Commercial Angus Heifer

Used to single strand electric.  
Sired by GF Pretty Boy 807H - Reg #2141035.  
Exposed to GF Black Market 1403J- Reg #2219238 on July 15.  
Pregnancy checked by Miller Vet Clinic October

**CONSIGNED BY ROB CAMPBELL.**



## 74 Commercial Angus Heifer

Used to single strand electric.  
Sired by GF Pretty Boy 807H - Reg #2141035.  
Exposed to GF Black Market 1403J- Reg #2219238 on July 15.  
Pregnancy checked by Miller Vet Clinic October

**CONSIGNED BY ROB CAMPBELL.**



## 75 Commercial Angus Heifer

Used to single strand electric.  
Sired by GF Pretty Boy 807H - Reg #2141035.  
Exposed to GF Black Market 1403J- Reg #2219238 on July 15.  
Pregnancy checked by Miller Vet Clinic October

**CONSIGNED BY ROB CAMPBELL.**



## 76 Commercial Angus Bred Heifer

DGB 12L DOB: 01/27/2023 BW: 82lb  
Dam – Bridgehaven Georgina 18A  
Checked safe in calf by Heartland Vet Services for a Mid April Calf  
Double vaccinated with Pyramind 10, Covexin and single vaccination to Scour Boss 9 and Ivomec

**CONSIGNED BY BRIDGEHAVEN ANGUS.**

We have chosen 2 commercial heifers that we feel represent our breeding program very well. Both DGB12L and DGB29L are medium sized heifers that have very good feet and legs for added longevity. Mothering ability is a must on our farm. Last year we calved out 15 first time heifers only helping one of them. They calved in a group pen with other mature cows. 12L has lineage back to Werner Wild Fire and Woodhill Foresight . We appreciate the genetics in this heifer so much we bred her dam back to the same sire again for another heifer to replace 12L. 29L is a very well-bred heifer with Quaker Hill Objective 3J15 and Hoover Dam in her genetic pool. Her progeny should have no trouble pushing the scale to profitable numbers. Both heifers are bred to a Baldrige Movin On Bull, that we chose from our bull pen, and used on all our replacement heifers this season. Make sure you check out Baldrige Movin On in the Select Sires Catalogue, you will be impressed with his numbers, and what you see.



## 77 Commercial Angus Bred Heifer

DGB 29L DOB: 02/27/2023 BW: 80lb  
Dam – Bridgehaven Maisy 12H  
Checked safe in calf by Heartland Vet Services for a Mid April Calf.  
Double vaccinated with Pyramind 10, Covexin and single vaccination to Scour Boss 9 and Ivomec

**CONSIGNED BY BRIDGEHAVEN ANGUS.**



## 78 Commercial Heifer

$\frac{3}{4}$  Angus Simmental cross.  
Sired by First Line Ferguson 2J.  
Pasture exposed to First Line 13L a Sitz Resilient son from March 17-July 14. Vet confirmed estimated breeding date: March 29, 2024

**CONSIGNED BY FIRST LINE ANGUS.**



## 79 Commercial Heifer

F1 Angus Simmental Cross.  
Sired by First Line Arden 14G.  
Pasture exposed to First Line 13L a Sitz Resilient son from March 17-July 14. Vet confirmed estimated breeding date: April 4, 2024

**CONSIGNED BY FIRST LINE ANGUS.**



# Angus Youth

## 2024 JUNIOR INCENTIVE RECIPIENT



Congratulations to Alyssa Weber for completing her 2024 4-H project with Weber Grist Headliner 409. Her calf was purchased in-dam from Luckhardt Headliner 9K from the 2023 Bluewater sale.



Congratulations to Travis McGillivray for completing his 2024 4H project with Lot 20 from the 2023 Bluewater sale, Riverview Blackbird 2L-K!

## 2023 JUNIOR INCENTIVE RECIPIENTS



Congratulations to Travis and Carter McGillivray for completing their 2023 4H Projects.

Travis (right) purchased and showed Luckhardt Vicki 5K and Carter (left) with Riverview Maxi 7K from the 2022 Bluewater Angus Sale.



# 2024 CANADIAN ANGUS HALL OF FAME INDUCTEE

*Gary Harron*

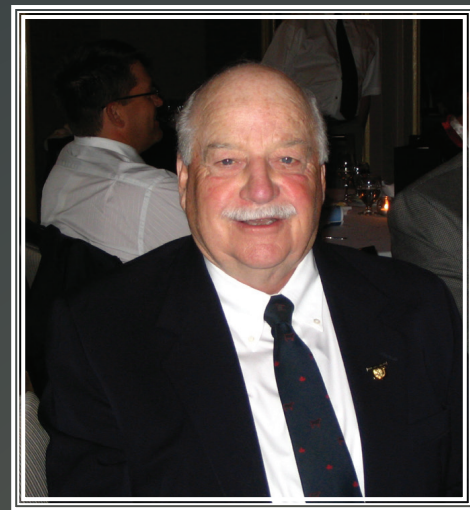
Gary Harron was born January 7, 1937 in Elsinore, Ontario. His parents owned and operated Harrons General Store and gas station and had multiple farms. As a young boy Gary had no interest in working at the store, delivering groceries or pumping gas. It was the farms that he loved.

After high school Gary attended agricultural college in Guelph (now Guelph University) and graduated in 1956. He became a Councillor in Amabel Township in 1969 and served on the council for 14 years, 12 of those as reeve. In 1978 he became Warden of Bruce County.

Gary and his father started their Angus herd in 1954 with the purchase of the Angus heifer Pride Morvette of Kincardine, a direct

import from Scotland. Gary owned and bred Angus his entire life and still owned six purebred Angus females when he passed away in January 2023. He loved attending cattle shows as an exhibitor and spectator and could be counted on to announce the Angus Show at the Royal Agricultural Winter Fair in Toronto.

Over the last 30 years, Gary volunteered to manage the Cameron McTaggart Angus Scholarship. The scholarship is named after a past secretary of the Ontario Angus Association. The goal is to provide funds for Angus youth who are embarking on their first year of post secondary education. He developed the application form and the criteria for eligibility.



*“He was a true gentleman and a true Angus ambassador, and he always liked his prime rib.”*

Gary was a wealth of knowledge on pedigree history for many young breeders just starting in the breed. He would partner with new young breeders to help them get started and would always offer to drop off new breeders' purchases free of charge to help them out.

The group that started the Bluewater calf sale at Keady Livestock Market included Gary. The plan was to have the sale the week before the Bluewater purebred sale so breeders would have money from their calves to spend at the sale. The sale continues today and commands some of the highest calf prices in Canada during the fall calf run.

Gary served as president of the Bluewater Angus Club, Ontario Angus Association and Canadian Angus Association boards. Gary was Canadian Angus Association president in 1996. Gary and his daughter Tammi are the only father and daughter to serve as presidents of the Canadian Angus Association.

Doug Milne-Smith served with Gary on the Canadian Angus Association Board of Directors. “When Gary went to board meetings, he was strictly business,” he recalls. “Gary made sure that the wording on rules and regulations was proper and correct. He was pretty straight and narrow and loyal. When he talked, everybody listened. He would wait for everyone to speak and then he would decipher what was good and bad and then say, ‘This is what I think.’”





## CONSIGNOR LISTING

### 4D ACRES

Alex, Shawna & Bella Davidson  
Dobbinson, ON N0H 1L0  
519-477-1944 | 519-270-8052  
davidson.bellaa@gmail.com

### ANGUS KNOLL FARM

Rodney & Karen Ribey  
1163 Conc 6, Tiverton ON N0G 2T0  
519-389-4405 | 519-386-4394  
angusknollfarm@bmts.com

### BRIDGEHAVEN ANGUS

Dennis & Donna Bridge  
Kincardine, ON  
519-395-5010 | bridged@hurontel.on.ca

### CAMBRAY LIVESTOCK

Luke & Carl, Matt & Joe Jewell  
1153 The Glen Rd, Woodville ON  
703-934-2853 | luke.jewell@fcc.ca

### FIRST LINE ANGUS

Will Stoneman, Kasey Whitwell &  
Brian Whitwell  
560 First Line, RR #3 Hagersville ON  
Brian: 905-768-5148  
Will: 587-873-7257  
k.whitwell@hotmail.com

### GLEN ISLAY ANGUS

Don & Jeanette Currie  
2234 Concession 11, Nottawa ON  
705-445-1526 | 705-715-2234  
doncurrie@glenislay.com

### HILLBROOK CATTLE COMPANY

Cam Hill  
137603 Grey Road 12, Meaford ON  
519-373-6993 | cdl.hill@gmail.com

### LEN MAR FARMS

Colin & Donja Trivers  
14284 Hwy 17, Thessalon ON P0R 1L0  
705-842-3019 | 705-254-8028  
colindonjat@gmail.com

### LOCHLEA ANGUS

Brian & Janice Copeland  
54 Station St., Alton ON L7K 0E2  
519-993-9358  
lochleaangus@gmail.com

### LUCKHARDT ANGUS

Jim & Nancy Luckhardt  
Chatsworth ON  
519-372-6304  
luckhardtjim@gmail.com

### MELMAC ANGUS

Graham & Murray McLean  
5663 Longwoods Road, Melbourne ON  
519-808-6511 | 519-319-1366  
mmclean@burnbraefarms.com  
grahamm@agris.coop

### ONE OAK

Steve & Karen Brubacher  
skbrubacher1@gmail.com

### RIVERVIEW ANGUS

Dale & Debbie Giffen  
3913 Hwy 26, Minesing ON  
705-728-7734  
katherine\_giffen@hotmail.com

### ROB CAMPBELL

rob@bettertogetherfarms.ca

### STAFFORD ANGUS

Brady Stafford & Mary Hayes  
44400 Fruit Ridge Line  
St. Thomas, ON N5P 3S9  
519-301-0937  
staffordangus@hotmail.com

### SUNRISE ANGUS

Joel & Irene Thomas  
477285 3rd Line,  
Melancthon ON L9V 1T5  
519-940-1258  
sunriseangusfarm@outlook.com

### TAMBRI ANGUS

Brian & Tammi Ribey  
Paisley, ON  
519-389-4329  
tammi.ribey@gmail.com

### WEBER FAMILY ANGUS

Ian, Tina, Alyssa & Spencer Weber  
786 Reid Crescent,  
Listowel, ON N4W 0A2  
519-710-3300  
ian@weberfamilyangus.com

### WILLOWSIDE FARMS

Nancy & Ron Cochrane  
Thornton, ON  
willosidefarm@gmail.com

## EXPERT CARE FOR YOUR CATTLE

### SPECIALIZED SERVICES:

- HERD HEALTH AND PREVENTATIVE CARE
- BULL BREEDING SOUNDNESS EXAMS
- ARTIFICIAL INSEMINATION (AI)
- EMBRYO IMPLANTATION
- NUTRITION AND FEEDING CONSULTATIONS
- EMERGENCY SERVICES AVAILABLE 24/7



# MILLER

VETERINARY SERVICE

Dr. Jon Waito, Dr. Ted Coulter, Dr. Brett Freeman, Dr. Julia Stewart

271 Garafraxa St. Chatsworth, ON (519) 794-2173 millerveterinaryservice.com





LOT 12



LOT 15



LOT 28



LOT 30



LOT 32



LOT 36